



Product Information

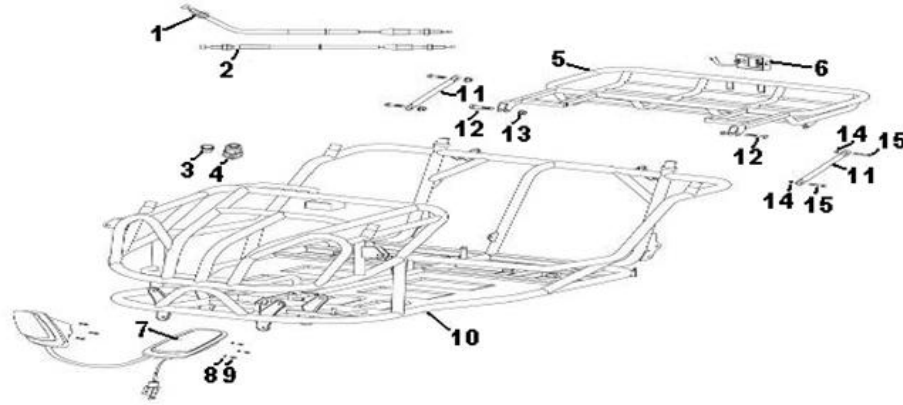
Baja Web > Product Information > Parts Lists > GOKART > BR150S Howhit Baja Reaction 150cc Go Kart (VIN PREFIX L6K)

BR150S Howhit Baja Reaction 150cc Go Kart (VIN PREFIX L6K)

BR150S Howhit Baja Reaction 150cc Go Kart (VIN PREFIX L6K)



Frame [Image]

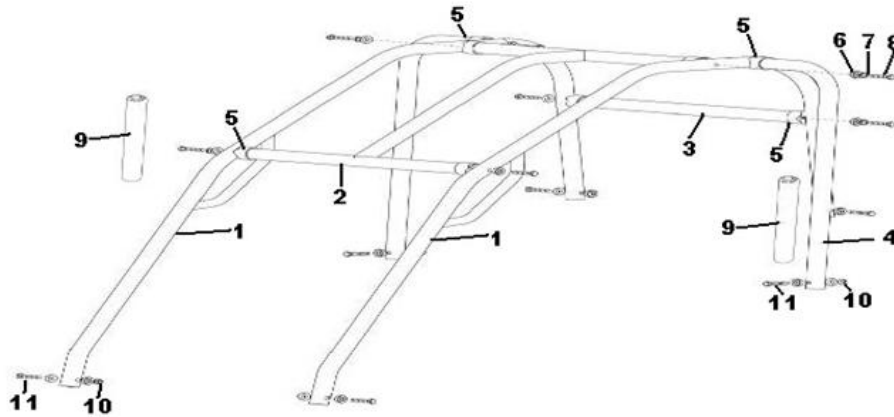


Frame

Item No	Part Number	Description	Qty
	DN150-815	KEYS (1 SET)	1
	BR150S-554	HEAD LIGHT BULB	2
001	BR150S-100	CABLE COMP. PARKING BRAKE	1
002	BR150S-101	CABLE COMP. REVERSE	1
003	BR150S-102	ENGINE STOP BUTTON	1
004	BR150S-103	IGNITION START SWITCH	1
005	BR150S-104	REAR CARGO RACK BLACK	1
005	BR150S-535	REAR CARGO RACK RED	1
006	BR150S-105	TAIL LAMP	1
007	BR150S-106	HEADLIGHT SET	1

008	BR150S-107	WASHER F6(GB93)	6
009	BR150S-108	BOLT, M6X12(GB70)	6
010	BR150S-109	MAIN FRAME BLACK	1
010	BR150S-536	MAIN FRAME RED	1
011	BR150S-110	BACK SUPPORT ARM BLACK	2
011	BR150S-537	BACK SUPPORT ARM RED	2
012	BR150S-111	BOLT M8 X40(GB5783)	2
013	BR150S-112	NUT LOCKING FLANGE M8(GB6187)	2
014	BR150S-113	NUT M10-1.25X10, FLANGE SELF LOCK	4
015	BR150S-114	BOLT M10X1.25X25(GB5786)	4

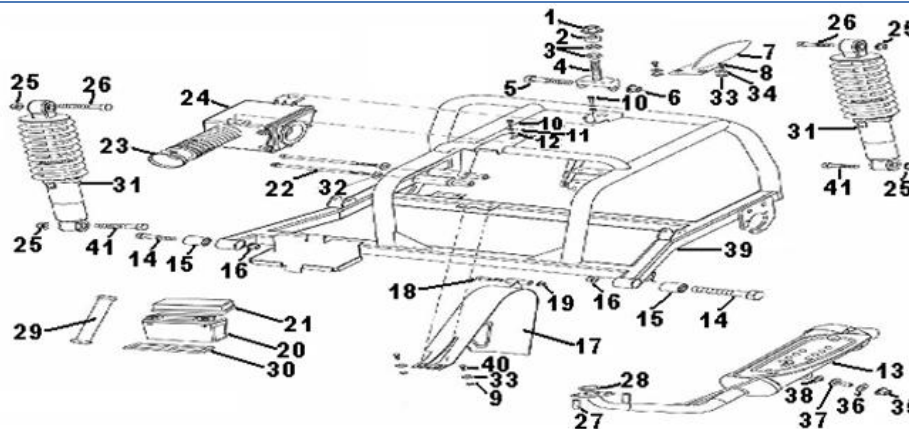
Brushguard [Image]



Brushguard

Item No	Part Number	Description	Qty
001	BR150S-115	GUARD SILVER	2
001	BR150S-539	GUARD BLACK	2
002	BR150S-116	FRAME CROSS MEMBER BAR SILVER	1
002	BR150S-538	FRAME CROSS MEMBER BAR BLACK	1
003	BR150S-117	RR .FRAME CROSS MEMBER BAR SILVER	1
003	BR150S-540	RR .FRAME CROSS MEMBER BAR BLACK	1
004	BR150S-118	GUARD SIDE RAIL SILVER	2
004	BR150S-541	GUARD SIDE RAIL BLACK	2
005	BR150S-119	TUBE COLLAR F32	8
006	BR150S-120	WASHER M8X14X2, SPRING	8
007	BR150S-121	WASHER SPHERICAL M8-32	20
008	BR150S-122	BOLT M8 X 60 F8 (GB5782)	8
009	BR150S-123	PADDING FRAME RED	2
009	BR150S-552	PADDING FRAME BLACK	2
010	BR150S-124	NUT M8 (GB6187)	6
011	BR150S-125	BOLT M8 X 55 (GB5782)	6

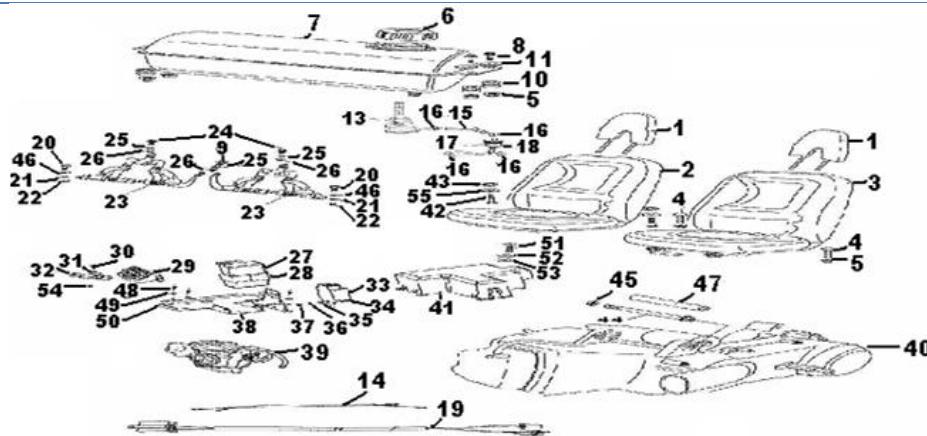
Rear Suspension [Image]



Rear Suspension

Item No	Part Number	Description	Qty
	BR150S-548	AIR FILTER	1
001	BR150S-126	NUT FLANGE M14X1.5(GB6187)	1
002	BR150S-127	ENGINE MOUNT SPACER LINK	1
003	BR150S-128	JAM NUT M14X1.5(GB6170)	2
004	BR150S-129	RR. ENGINE BRACKET M14X90	1
005	BR150S-130	BOLT M10-1.25X70, HEX (PT)	1
006	BR150S-131	NUT M10-1.25X10, FLANGE SELF LOCK	1
007	BR150S-132	REAR DISC COVER	1
008	BR150S-133	FLANGE BOLT, M6x12(GB5787)	2
009	BR150S-134	NUT M6-1.0X7, FLANGE SELF LOCK	2
010	BR150S-135	BOLT M6X20(GB5783)	2
011	BR150S-136	WASHER M6X10X2, SPRING	2
012	BR150S-137	WASHER M6X12X2, PLATE	2
013	BR150S-138	MUFFLER	1
014	BR150S-139	BOLT M12-1.25X60, HEX (PT)	2
015	BR150S-140	RUBBER BUSH, RR. SWINGARM	2
016	BR150S-141	NUT M12X1.25(GB6187)	2
017	BR150S-142	GUARD, CHAIN	1
018	BR150S-143	BOLT, HHFS M8X60(GB5782)	1
019	BR150S-144	NUT FLANGE M8(GB6187)	1
020	50-01-9002	BATTERY (YTX7L-BS-FP)	1
021	BR150S-146	BATTERY COVER	1
022	BR150S-147	BOLT M10-1.25X150, FLANGE (PT)	2
023	BR150S-148	AIR CLEANER CLAMP	1
024	BR150S-149	AIR CLEANER	1
025	BR150S-150	NUT M10(GB6187)	4
026	BR150S-151	BOLT M10-1.25X45, HEX (PT)	2
027	BR150S-152	NUT M6-1.0X31.50, CAP	2
028	BR150S-153	GASKET EXHAUST PIPE	1
029	BR150S-154	BATTERY BAND	1
030	BR150S-155	BATTERY LOWER	1
031	BR150S-156	REAR SHOCK RED	2
031	BR150S-543	REAR SHOCK YELLOW	2
032	BR150S-157	LOCKING WASHER F10	2
033	BR150S-158	WASHER M6X12X5, PLATE	4
034	BR150S-159	WASHER M6X10X2, SPRING	2
035	BR150S-160	NUT M10-1.25X10, FLANGE SELF LOCK	1
036	BR150S-161	BUSHING F15X2X5.7	1
037	BR150S-162	WASHER M10X20X2, PLATE	2
038	BR150S-163	RUBBER BUSHING	1
039	BR150S-164	DRIVETRAIN FRAME	1
040	BR150S-165	BOLT M6-1.0X20, HEX (FT)	2
041	BR150S-166	BOLT, M10X1.25X40(GB7585)	2

Seats [Image]



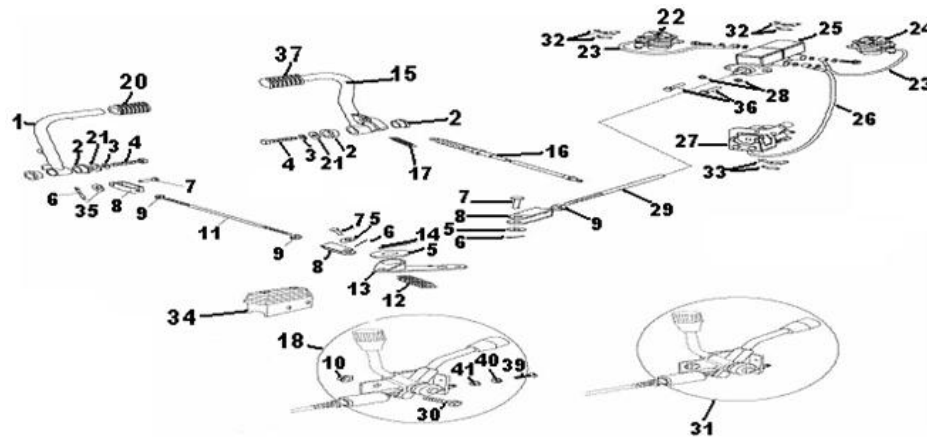
Seats

Item No	Part Number	Description	Qty
---------	-------------	-------------	-----

	DN150-174	BOOT SIDE CASE	1
	BR150S-550	FUSE HOLDER	1
001	BR150S-167	HEAD REST	2
002	BR150S-168	DRIVER SEAT	1
003	BR150S-169	PESSANGER SEAT	1
004	BR150S-170	SEAT BOLT M8X45(GB37)	2
005	BR150S-171	NUT M8 GB6187	6
006	BR150S-172	FUEL TANK CAP	1
007	BR150S-173	FUEL TANK	1
008	BR150S-174	BOLT, M8X45(GB5782)	4
009	BR150S-175	BOLT M10X1.25X25 (GB5786)	2
010	BR150S-176	RUBBER MOUNT	4
011	BR150S-177	WASHER M8X15X1.50, PLATE	4
012	BR150S-178	WASHER, F8(GB97.1)	2
013	BR150S-179	FUEL VALVE	2
014	BR150S-180	WIRING HARNESS	1
015	BR150S-181	TUBE #1	1
016	BR150S-182	TUBE CLIP #2	4
017	BR150S-183	FUEL FILTER	1
018	BR150S-184	TUBE #2	1
019	BR150S-185	WIRING HARNESS, SECONDARY	1
020	BR150S-186	SEAT BELT BOLT M12X30	2
021	BR150S-187	WASHER F12(GB97.1)	2
022	BR150S-188	NUT, M12(GB6171)	2
023	BR150S-189	SAFETY BELT	2
024	BR150S-190	BOLT M10X1.25X20 (GB5786)	2
025	BR150S-191	WASHER F10(GB97.1)	3
026	BR150S-192	NUT M10-1.25X10, FLANGE SELF LOCK	3
027	BR150S-193	CDI	1
028	BR150S-194	C.D.I. UNIT RUBBER BAND	1
029	BR150S-195	STARTER RELAY	1
030	BR150S-196	BOLT M4X10(GB818)	1
031	BR150S-197	NUT M4-0.7X3, HEX	1
032	BR150S-198	RESISTOR	1
033	BR150S-199	RECTIFIER	1
034	BR150S-200	BOLT M5X16(GB818)	1
035	BR150S-201	FLAT WASHER F5(GB97.1)	1
036	BR150S-202	WASHER M6X8X2, SPRING	1
037	BR150S-203	NUT M5-0.8X4, HEX	1
038	BR150S-204	ELECTRICAL FIXING PLATE	1
039	BR150S-205	CARBURETOR	1
040	BR150S-206	ENGINE (150CC ATV)	1
041	BR150S-207	COVER, ELECTRICAL BOX	1
042	BR150S-208	BOLT M8X60 M8X55(GB5782)	2
043	BR150S-209	SPRING WASHER F8(GB93)	2
044	BR150S-210	ENGINE BOLT M10X1.25195(GB5787)	1
045	BR150S-211	NUT M10-1.25X10, FLANGE SELF LOCK	1
046	BR150S-212	SPRING WASHERF12(GB93)	2
047	BR150S-213	ENGINE INSTALLATION BUSHING	1
048	BR150S-214	SCREW, M5X16(GB818)	3
049	BR150S-215	LOCK WASHER F5(GB93)	3
050	BR150S-216	NUT M5-0.8X4, HEX	3
051	BR150S-217	SCREW, M4X10(GB818)	1
052	BR150S-218	WASHER F4(GB97.1)	1
053	BR150S-219	SPRING WASHER F4(GB93)	1
054	BR150S-220	FUSE 15A / 250V GLASS TUBE	2
055	BR150S-221	WASHER M12X24X2, PLATE	2
056	BR150S-547	IGNITION COIL	1

Brakes [Image]

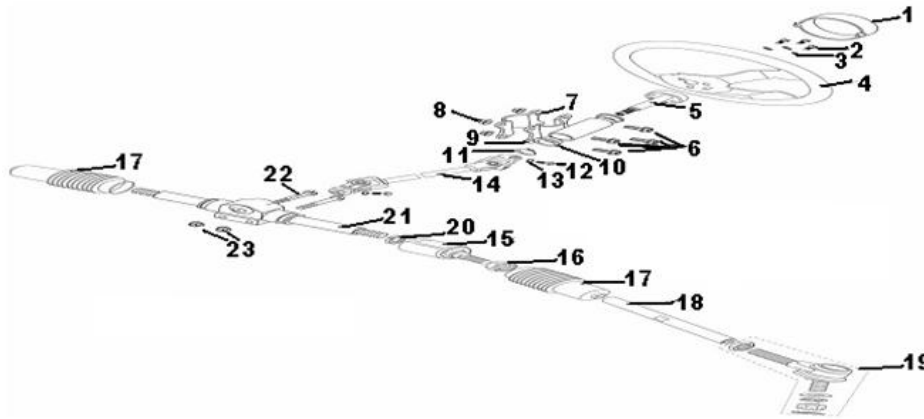
»



**Brakes**

Item No	Part Number	Description	Qty
	BR150S-625	BRAKE PEDAL, BLACK	1
	BR150S-626	GAS PEDAL, BLACK	1
001	BR150S-222	BRAKE PEDAL, RED	1
002	BR150S-223	PEDAL BUSH	4
003	BR150S-224	SPRING WASHER, F8(GB93)	2
004	BR150S-225	BOLT, M8X15(GB5783)	2
005	BR150S-226	WASHER, F12(GB97.1)	1
006	BR150S-227	COTTER PIN, 2X20(GB91)	3
007	BR150S-228	AXIS PIN, 6X16(GB882)	3
008	BR150S-229	U-JOINT	3
009	BR150S-230	HEX NUT M8(GB6170)	3
010	BR150S-231	LOCKING NUT, M8(GB6187)	4
011	BR150S-232	REAR BRAKE TENSION ROD	1
012	BR150S-233	REAR BRAKE RETURN SPRING	1
013	BR150S-234	BRAKE ARM	1
014	BR150S-235	COTTER PIN 2.5X35(GB91)	1
015	BR150S-236	GAS PEDAL, RED	1
016	BR150S-237	THROTTLE CABLE	1
017	BR150S-238	THROTTLE RETURN SPRING	1
018	BR150S-239	HAND BRAKE BAR COMP.	1
019	BR150S-240	U-JOINER #2	1
020	BR150S-241	BRAKE PEDAL COVER	2
021	BR150S-242	WASHER F8(GB97.1)	2
022	BR150S-243	FR. BRAKE CALIPER.L	1
023	BR150S-244	OIL PIPE#1	1
024	BR150S-245	FR. BRAKE CALIPER.R	1
025	BR150S-246	MASTER CYLINDER	1
026	BR150S-247	OIL PIPE#2	1
027	BR150S-248	RR. BRAKE CALIPER ASSY. W/BACKET	1
028	BR150S-249	NUT, M8(GB6187)	2
029	BR150S-250	SPINDLE PIN	1
030	BR150S-251	BOLT, M8X20(GB5783)	2
031	BR150S-252	REVERSE BAR COMP.	1
032	BR150S-253	FR. BRAKE PADS, FR. BRAKE PUMP	1
033	BR150S-254	BRAKE PADS, RR. BRAKE PUMP	1
034	BR150S-255	REVERSE LEVER COVER	2
035	BR150S-256	WASHER, F6(GB97.1)	3
036	BR150S-257	BOLT M8-1.25X30, FLANGE (FT)	2
037	BR150S-258	THROTTLE PEDAL COVER	1

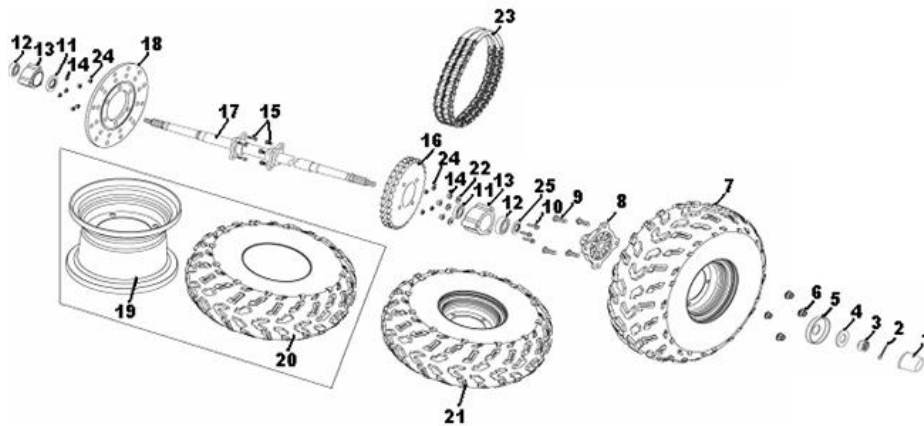
**Steering [Image]**



**Steering**

Item No	Part Number	Description	Qty
	BR150S-627	STEERING FLANGE BRACKET, BLACK	1
001	BR150S-259	STEERING WHEEL CAP	1
002	BR150S-260	BOLT: M6X12(GB5783)	3
003	BR150S-261	LOCK WASHER F6(GB93)	3
004	BR150S-262	STEERING WHEEL	1
005	BR150S-263	STEERING WHEEL FLANGE	1
006	BR150S-264	BOLT: M8X25(GB5783)	4
007	BR150S-265	STEERING FLANGE BRACKET	1
008	BR150S-266	NUT M8(GB6187)	4
009	BR150S-267	STEERING FLANGE BRACKET, RED	1
010	BR150S-268	STEERING AXLE CAP	2
011	BR150S-269	ELASTIC RING F20(GB894)	1
012	BR150S-270	BOLT, M8X25(GB5783)	2
013	BR150S-271	WASHER, F8	2
014	BR150S-272	UNIVERSAL JOINT	1
015	BR150S-273	TIE ROD CONNECTOR RACK END	2
016	BR150S-274	NUT M12-1.25X11, HEX	2
017	BR150S-275	BOOT	2
018	BR150S-276	TIE ROD	2
019	BR150S-277	ROD END (24X10MM / 47X12MM)	2
020	BR150S-278	NUT M16 X 1.5(GB810)	2
021	BR150S-279	RACK AND PINION ASSEMBLY	1
022	BR150S-280	BOLT, M8X60(GB5782)	2
023	BR150S-281	NUT M8-1.25X9, FLANGE SELF LOCK	2

**Rear Axle [Image]**



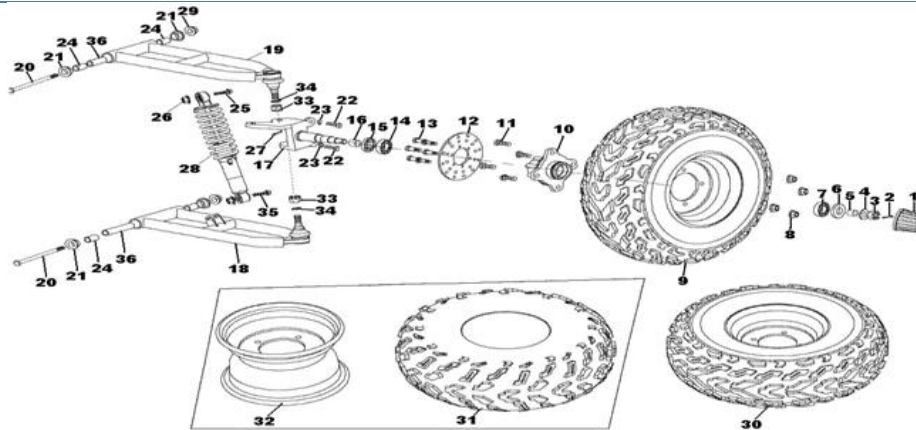
**Rear Axle**

Item No	Part Number	Description	Qty
001	BR150S-282	CAP, HUB	2
002	BR150S-283	PIN SPECIAL3X40(GB91)	2



003	BR150S-284	NUT M16-1.5X17, HEX CASTLE	2
004	BR150S-285	WASHER F16	2
005	BR150S-286	DUST COVER	2
006	BR150S-287	NUT FLANGE, M10X1.25(GB6187)	8
008	BR150S-289	HUB, REAR WHEEL	2
009	BR150S-290	WHEEL HUB STUDS(GB5782)	8
010	BR150S-291	BOLT MBX60	6
011	BR150S-292	OIL SEAL30X55X12(GB5782)	1
012	BR150S-293	BEARING 6006	2
013	BR150S-294	BEARING BASE	2
014	BR150S-295	NUT M8(GB6170)	6
015	BR150S-296	BOLT HHFS M8 X 25(GB5787)	8
016	BR150S-297	SPROCKET, DRIVEN	1
017	BR150S-298	AXLE	1
018	BR150S-299	BRAKE DISC	1
019	BR150S-300	REAR RIM BLACK	2
019	BR150S-544	REAR RIM SILVER	2
020	BR150S-301	REAR TIRE 22X10-10	2
022	BR150S-303	WASHER F8 GB93	6
023	BR150S-304	CHAIN, 520 / 24 LINKS DOUBLE CHAIN	1
024	BR150S-305	NUT M8(GB6187)	8
025	BR150S-306	OIL SEAL30X56X12(GB5782)	1

## Front Suspension [Image]

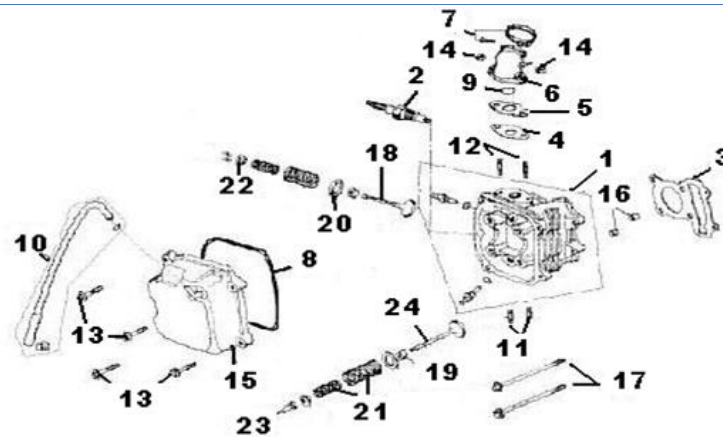


## Front Suspension

Item No	Part Number	Description	Qty
001	BR150S-307	CAP, HUB	2
002	BR150S-308	PIN SPLIT 2.5X35 (GB91)	2
003	BR150S-309	NUT CASTLE M14X1.5 (GB9459)	2
004	BR150S-310	WASHER F10 (GB96)	2
005	BR150S-311	BUSHING BRASS 27X5X8	2
006	BR150S-312	BEARING SEAL 27X42X7	2
007	BR150S-313	BEARING (GB6203)	2
008	BR150S-314	NUT M10(GB6187)	8
010	BR150S-316	WHEEL HUB	2
011	BR150S-317	TYRE BOLT,M10X1.25X35	8
012	BR150S-318	BRAKE DISK	2
013	BR150S-319	BOLT M6X16 GB5783	12
014	BR150S-320	BEARING(GB6204)	2
015	BR150S-321	BEARING SEAL 25X47X7	2
016	BR150S-322	BUSHING BRASS	2
017	BR150S-323	SPINDLE FR. LH	1
017	BR150S-324	SPINDLE FR. RH	1
018	BR150S-325	A-ARM DOWN LH	1
018	BR150S-326	A-ARM DOWN RH	1
019	BR150S-327	A-ARM UPPER LH	1
019	BR150S-328	A-ARM UPPER RH	1
020	BR150S-329	BOLT, M10X1.25X170(GB5787)	4

021	BR150S-330	NYLON COLLAR	8
022	BR150S-331	BOLT ,M8X16,FLANGE	4
023	BR150S-332	SPRING WASHER F8 (GB93)	4
024	BR150S-333	BUSHING	8
025	BR150S-334	BOLT M10X1.25X45	2
026	BR150S-335	NUT M10-1.25X10, FLANGE SELF LOCK	4
027	BR150S-336	COTTER PIN 2.5X30	2
028	BR150S-337	FRONT SHOCK RED	2
028	BR150S-546	FRONT SHOCK YELLOW	2
029	BR150S-338	NUT, M10X.125(GB6187)	4
031	BR150S-340	FRONT TIRE 19X7-8	2
032	BR150S-341	FRONT RIM BLACK	2
032	BR150S-545	FRONT RIM SILVER	2
033	BR150S-342	CASTLE NUT, M12(GB9459)	2
034	BR150S-343	SPRING WASHER, M12(GB93)	2
035	BR150S-344	BOLT M10-1.25X40, HEX (PT)	2
036	BR150S-624	A-ARM BUSHING	1

## Cylinder Head [Image]

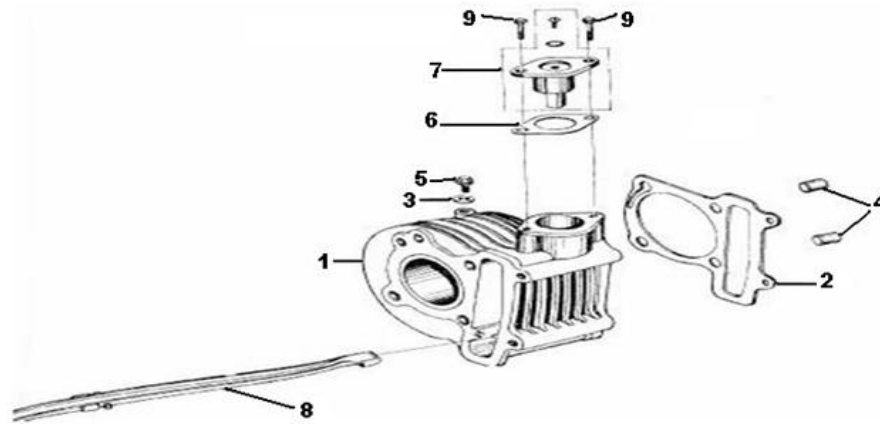


## Cylinder Head

Item No	Part Number	Description	Qty
	BR150S-346	PLUG SPARK (C7HSA NGK)	1
001	BR150S-345	CYLINDER HEAD SUBASSY	1
003	BR150S-347	CYLINDER HEAD GASKET	1
004	BR150S-348	CARBURETOR INSULATOR GASKET	1
005	BR150S-349	CARBURETOR INSULATOR	1
006	BR150S-350	PIPE COMP.IN	1
007	BR150S-351	BAND INSULATOR	1
008	BR150S-352	GASKET, HEAD COVER	1
009	BR150S-353	O-RING 27?2	1
010	BR150S-354	TUBE BREATHER	1
011	BR150S-355	BOLT STUD M6?18	2
012	BR150S-356	BOLT STUD M6?50	2
013	BR150S-357	BOLT FLANGE M6?25	4
014	BR150S-358	NUT FLANGE M6-ZN.D	2
015	BR150S-359	CYLINDER HEAD COVER	1
016	BR150S-360	PIN DOWEL 10?16	2
017	BR150S-361	BOLT FLANGE M6?100 CYLINDER HEAD	2
018	BR150S-362	INTAKE VALVE	1
019	BR150S-363	VALVE STEM SEAL	2
020	BR150S-364	VALVE SPRING OUTER SEAT	2
021	BR150S-365	SPRING VALVE OUTER. INNER	2
022	BR150S-366	RETAINER VALVE SPRING	2
023	BR150S-367	COTTER VALVE	4
024	BR150S-368	EXHAUST VALVE	1

## Cylinder [Image]

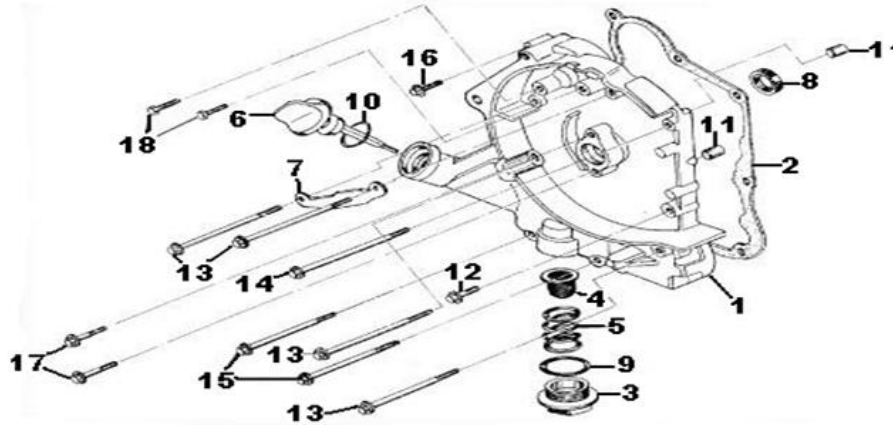




**Cylinder**

Item No	Part Number	Description	Qty
001	BR150S-369	CYLINDER	1
002	BR150S-370	GASKET CYLINDER .	1
003	BR150S-371	WASHER SEALING 6	1
004	BR150S-372	PIN DOWEL 10?16	2
005	BR150S-373	BOLT FLANGE M6?12-ZN.D	1
006	BR150S-374	GASKET TENSION LIFTER	1
007	BR150S-375	LIFTER ASSY.TENSIONER	1
008	BR150S-376	GUIDE COMP.CAM CHAIN	1
009	BR150S-377	BOLT FLANGE 6?20	2

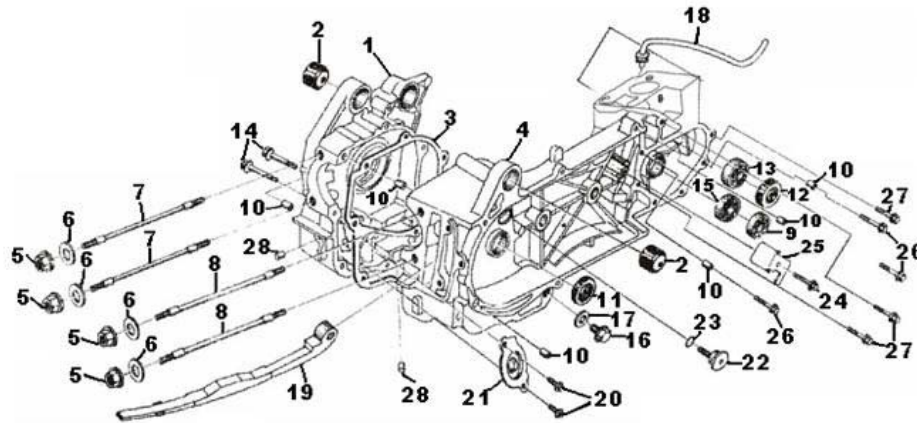
**Right Crankcase Cover [Image]**



**Right Crankcase Cover**

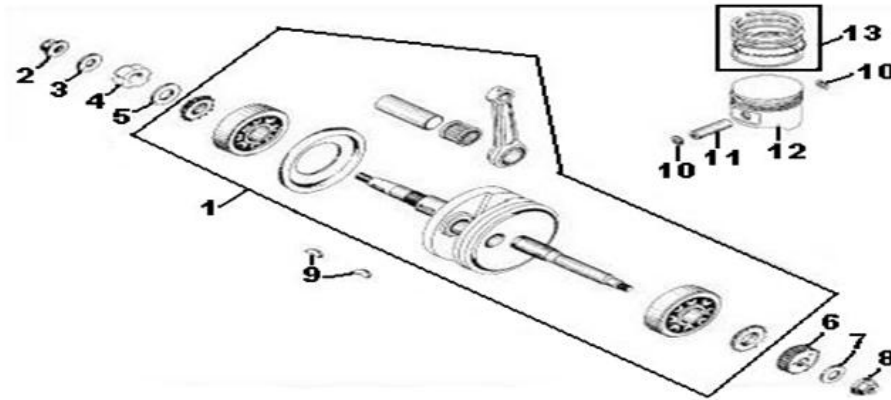
Item No	Part Number	Description	Qty
001	BR150S-378	COVER RCRANKCASE COMP	1
002	BR150S-379	CRANKCASE COVER GASKET	1
003	BR150S-380	OIL DRAIN PLUG	1
004	BR150S-381	OIL FILTER SCREEN	1
005	BR150S-382	SPRING OIL FILTER SCREEN	1
006	BR150S-383	DIPSTICK	1
007	BR150S-384	CLAMPER AC GENERATOR CORD	1
008	BR150S-385	OIL SEAL 19.8?30?5	1
009	BR150S-386	O-RING 30.8?3	1
010	BR150S-387	O-RING 18?3	1
011	BR150S-388	PIN DOWEL 8?14	2
012	BR150S-389	BOLT FLANGE M6?28	1
013	BR150S-390	BOLT FLANGE M6?95	4
014	BR150S-391	BOLT FLANGE M6?100	1
015	BR150S-392	BOLT FLANGE M6?110	2
016	BR150S-393	BOLT FLANGE M6?35	1
017	BR150S-394	BOLT FLANGE M6?20	2

018 BR150S-395 BOLT HEX M5?12-ZN.D 2  
 Crankcase [Image]



Item No	Part Number	Description	Qty
001	BR150S-396	RIGHT CRANKCASE	1
002	BR150S-397	BUSH ENGINE HANGER RUBBER	2
003	BR150S-398	CRANKCASE GASKET	1
004	BR150S-399	LEFT CANKCASE	1
005	BR150S-400	NUT FLANGE M8	4
006	BR150S-401	WASHER M8	4
007	BR150S-402	BOLT STUD M8?187.5	2
008	BR150S-403	BOLT STUD M8?195.5	2
009	BR150S-404	BEARING RADIAL BALL E6002	1
010	BR150S-405	PIN DOWEL 8?14	6
011	BR150S-406	OIL SEAL 19.8?30?5	1
012	BR150S-407	OIL SEAL 27?42?7	1
013	BR150S-408	BEARING RADIAL BALL E6004-2RS	1
014	BR150S-409	BOLT FLANGE M6?50	2
015	BR150S-410	BEARING RADIAL BALL E6301	1
016	BR150S-411	BOLT DRAIN PLUG M12	1
017	BR150S-412	WASHER DRAINPLUG f12	1
018	BR150S-413	TUBE BREATHER	1
019	BR150S-414	CAM CHAIN TENSIONER GUIDE	1
020	BR150S-415	BOLT FLANEG M6?12	1
021	BR150S-416	SEPARATOR OIL	1
022	BR150S-417	PIVOT CAM CHAIN TENSIONER	1
023	BR150S-418	OIL SEAL 15.2?12	1
024	BR150S-419	BOLT FLANGE M6?14	1
025	BR150S-420	PLATE KICK RETURN STOPPER	1
026	BR150S-421	BOLT FLANGE M6?35	3
027	BR150S-422	BOLT FLANGE M6?25	3
028	BR150S-423	PLUG OIL 6.5?5	2

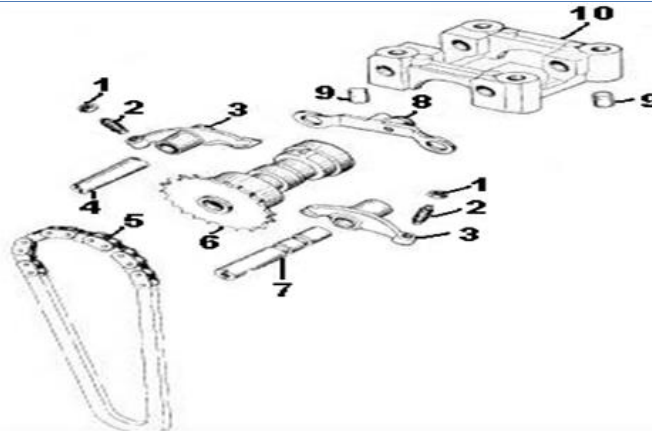
Crankshaft [Image]



**Crankshaft**

Item No	Part Number	Description	Qty
001	BR150S-424	CRANKSHAFT	1
002	BR150S-425	NUT M12?1.25	1
003	BR150S-426	WASHER 12-149HV 12-140HV	1
004	BR150S-427	SPANNER NUT	1
005	BR150S-428	WASHER	1
006	BR150S-429	GEAR KICK DRIVE	1
007	BR150S-430	WASHER f 12	1
008	BR150S-431	NUT M12	1
009	BR150S-432	KEY WOODRUFF	2
010	BR150S-433	CLIP PISTON PIN	2
011	BR150S-434	PIN PISTON	1
012	BR150S-435	PISTON	1
013	BR150S-436	PISTON RING SET	1

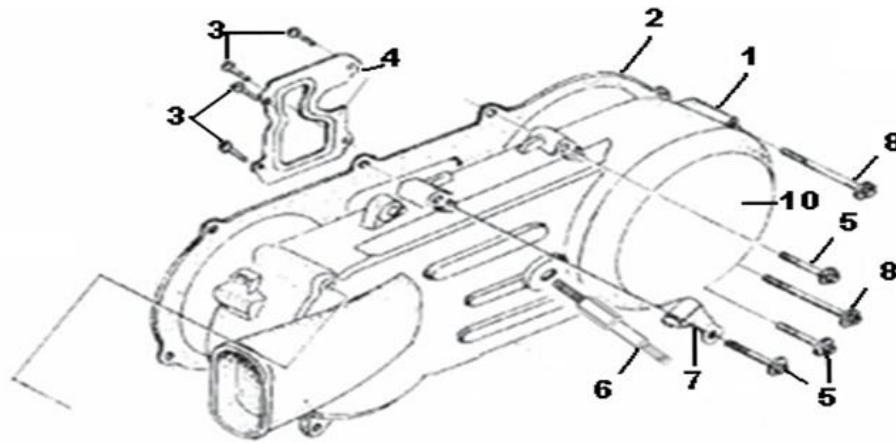
**Rocker Arm [Image]**



**Rocker Arm**

Item No	Part Number	Description	Qty
001	BR150S-437	NUT TAPPET ADJUSTING	2
002	BR150S-438	SCREW TAPPET ADJUSTING	2
003	BR150S-439	ARM VALVE ROCKER	2
004	BR150S-440	SHAFT EX ROCKER ARM	1
005	BR150S-441	CHAIN CAM SHAFT	1
006	BR150S-442	CAM SHAFT COMP 16T	1
007	BR150S-443	SHAFT COMP IN ROCK ARM	1
008	BR150S-444	PLATE COMP STOPPER	1
009	BR150S-445	PIN DOWEL10?16	2
010	BR150S-446	HOLDER CAMSHAFT	1

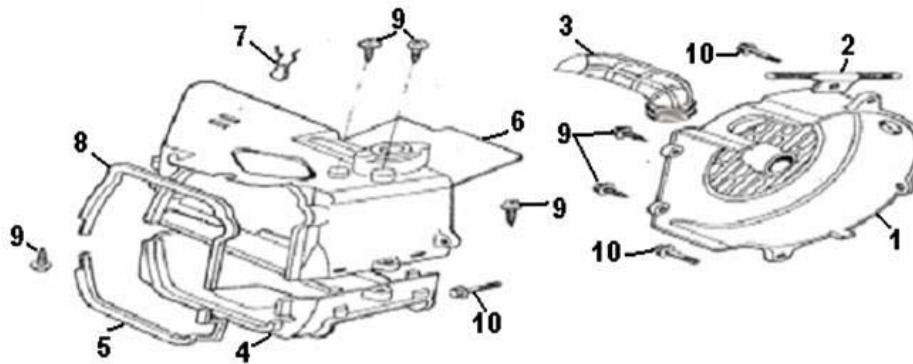
**Left Crankcase Cover [Image]**



**Left Crankcase Cover**

Item No	Part Number	Description	Qty
001	BR150S-447	LEFT CRANKCASE COVER	1
002	BR150S-448	LEFT CRANKCASE COVER GASKET	1
003	BR150S-449	SCREW TAPPING ST4.278-F-H	4
004	BR150S-450	PLATE L COVER	1
005	BR150S-451	BOLT FLANGE M6?40	6
006	BR150S-452	SPECIAL BOLT	1
007	BR150S-453	BOLT FLANGE M6?65	2
008	BR150S-454	BRAND COVER	1
009	BR150S-455	BOLT FLANGE M6?12	3
010	BR150S-553	COVER, REAR LEFT	1

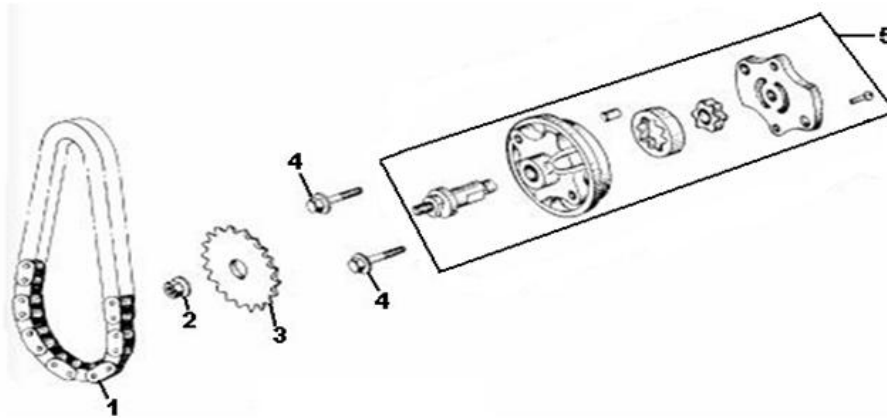
**Fan Shroud [Image]**



**Fan Shroud**

Item No	Part Number	Description	Qty
001	BR150S-456	FAN COVER COMP	1
002	BR150S-457	STARTER CABLE CLAMPER	1
003	BR150S-458	CARBURETOR COOLING DUCT	1
004	BR150S-459	LOWER SHROUD	1
005	BR150S-460	LOWER SHROUD SEAL	1
006	BR150S-461	UPPER SHROUD COMP	1
007	BR150S-462	HIGH TENSION CORD CLIP	1
008	BR150S-463	UPPER SHROUD SEAL	1
009	BR150S-464	SCREW ST 4.8?16-F	6
010	BR150S-465	BOLT M6?25	3

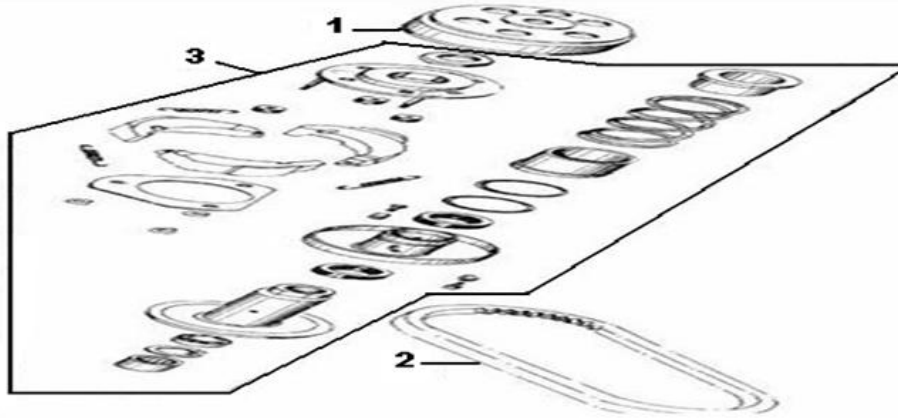
**Oil Pump [Image]**



**Oil Pump**

Item No	Part Number	Description	Qty
001	BR150S-466	CHAIN OIL PUMP	1
002	BR150S-467	NUT FLANGE M6	1
003	BR150S-468	SPROCKET OIL PUMP ORIVEN	1
004	BR150S-469	BOLT M6*25	2
005	BR150S-470	OIL PUMP	1

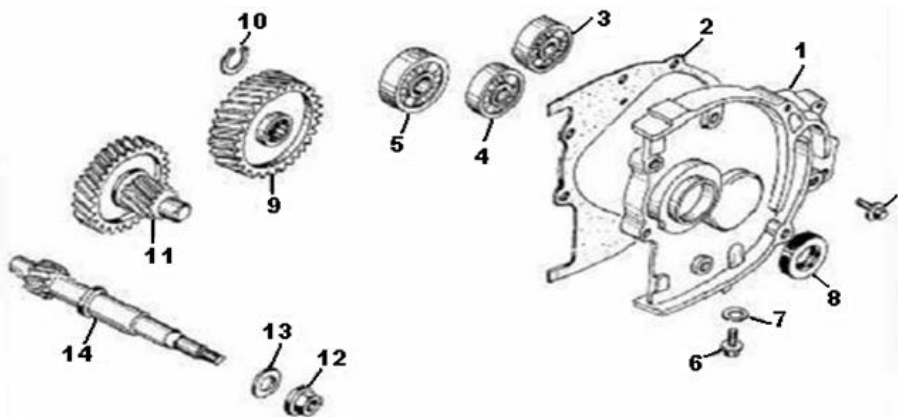
**Driven Pulley [Image]**



**Driven Pulley**

Item No	Part Number	Description	Qty
001	BR150S-471	OUTER CLUTCH ASSY.	1
002	BR150S-472	BELT DRIVE 743	1
003	BR150S-473	PULLEY ASSY DRIVEN	1

**Transmission [Image]**

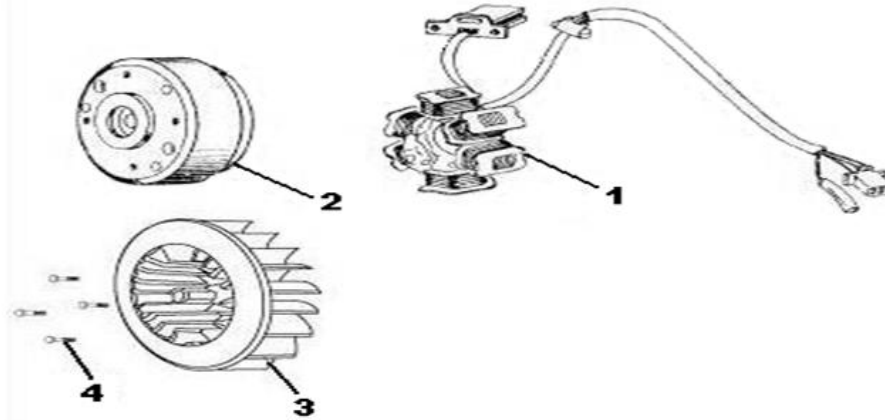


**Transmission**

Item No	Part Number	Description	Qty
---------	-------------	-------------	-----

001	BR150S-474	COVER TRANSMISSION	1
002	BR150S-475	GASKET TRANSMISSION COVER	1
003	BR150S-476	BEARING RADIAL BALL E6203	1
004	BR150S-477	BEARING RADIAL BALL E6202	1
005	BR150S-478	BEARING RADIAL BALL E6204	1
006	BR150S-479	BOLT SPECIAL M8*12	2
007	BR150S-480	WASHER M8	1
008	BR150S-481	OIL SEAL 20*32*6	1
009	BR150S-482	GEAR FINAL	1
010	BR150S-483	CIRCLIP EXTERNAL 20	1
011	BR150S-484	SHAFT COMP. COUNTER	1
012	BR150S-485	NUT M12-1.25X9, FLANGE	1
013	BR150S-486	WASHER M12X29X2, PLATE	1
014	BR150S-487	DRIVE SHAFT	1

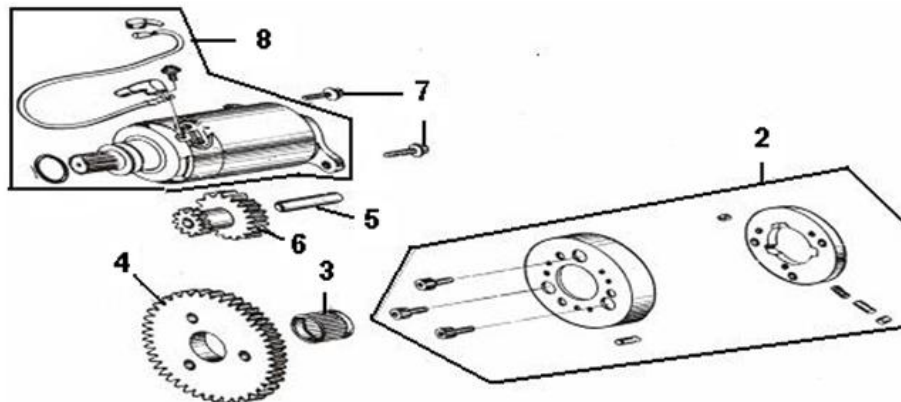
Magneto [Image]



Magneto

Item No	Part Number	Description	Qty
001	BR150S-488	STATOR	1
002	BR150S-489	FLYWHEEL	1
003	BR150S-490	COOLING FAN	1
004	BR150S-491	BOLT M6-1.0X18, FLANGE (FT)	4

Starter Motor [Image]

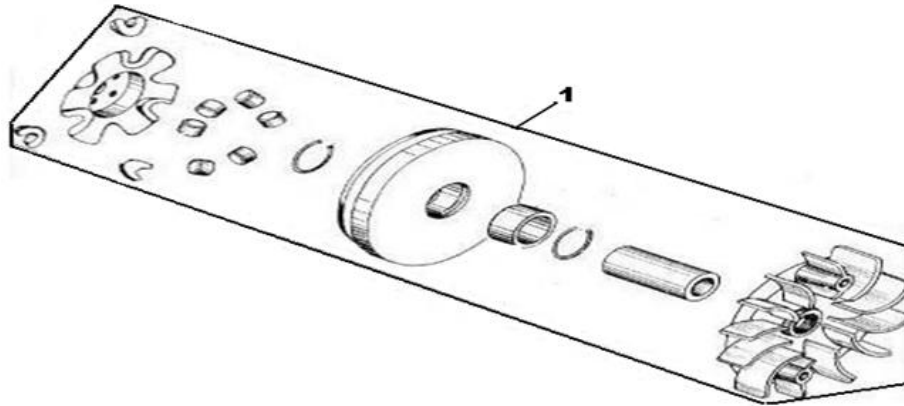


Starter Motor

Item No	Part Number	Description	Qty
001	BR150S-492	FLANGE STARTING CLUTCH	1
002	BR150S-493	ONE-WAY CLUTCH	1
003	BR150S-494	BEARING NEEDLE 28*32*17	1
004	BR150S-495	GEAR COMP.STARTING CLUTCH	1
005	BR150S-496	SHAFT STARTER REDUCTION GEAR	1
006	BR150S-497	GEAR STARTER REDUCTION	1
007	BR150S-498	BOLT FLANGE M6*16	2
008	BR150S-499	STARTER MOTOR	1



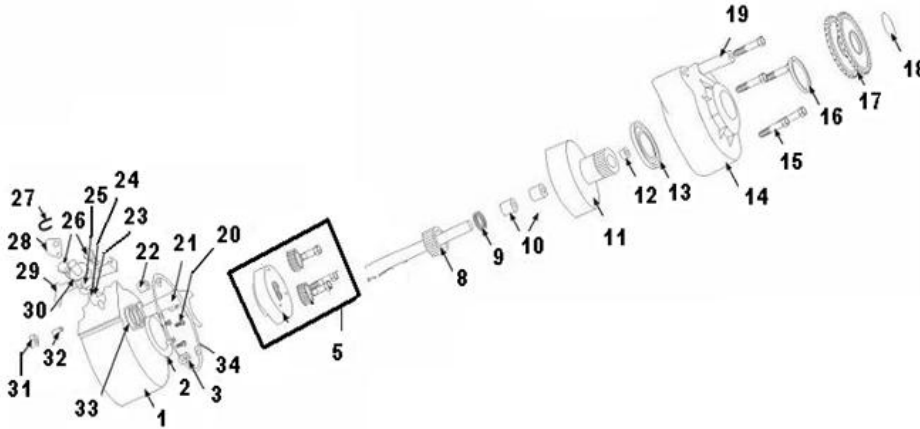
Drive Pulley [Image]



Drive Pulley

Item No	Part Number	Description	Qty
001	BR150S-500	PULLEY ASSY MOVABLE DRIVE	1

Reverse Assembly [Image]

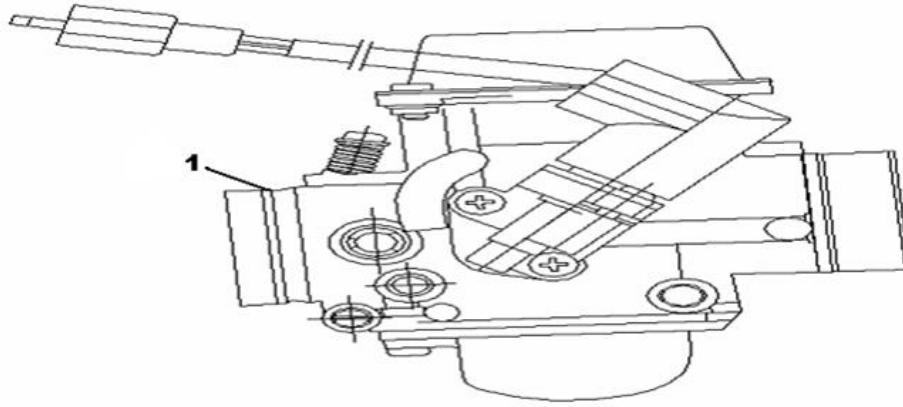


Reverse Assembly

Item No	Part Number	Description	Qty
001	BR150S-501	REVERSE GEAR PART OF CASE BODY	1
002	BR150S-502	RING GEAR OF REVERSE GEAR	1
003	BR150S-503	DOWEL PIN	2
005	BR150S-505	PLANET GEAR SEAT	1
008	BR150S-508	OUTPUT SHAFT	1
009	BR150S-509	THRUST BEARING	1
010	BR150S-510	NEEDLE BEARING	2
011	BR150S-511	RING GEAR OF POSITIVE AND NEGATIVE ROTAT	1
012	BR150S-512	CHOKE PLUG	1
013	BR150S-513	BEARING	2
014	BR150S-514	SHELL OF REVERSE GEAR	1
015	BR150S-515	M10 COUPLING SCREW	5
016	BR150S-516	OIL SEAL	1
017	BR150S-517	SPROCKET WHEEL,DOUBLE ROW	1
018	BR150S-518	CIRCLIP	1
019	BR150S-519	BUSH ABSORBER	1
020	BR150S-520	SCREW COUNTERSUNK HEAD	4
021	BR150S-521	SHIFTING YOKE	1
022	BR150S-522	HOLLOW DOWEL PIN	2
023	BR150S-523	M8 SETSCREW	1
024	BR150S-524	O-RING	1
025	BR150S-525	M8 LOCK NUT	1
026	BR150S-526	M6 COUPLING SCREW	2
027	BR150S-527	SPLIT CIRCLIP	1
028	BR150S-528	DRAGLINE DISC	1

029	BR150S-529	ADJUSTING HOLDER OF DRAGLING	1
030	BR150S-530	GEAR SHAFT OF GEAR SHIFT	1
031	BR150S-531	M6 LOCK SCREW	1
032	BR150S-532	M6 SET SCREW	1
033	BR150S-533	COMPRESSION SPRING OF SHIFTING YOKE	1
034	BR150S-549	REVERSE BOX GASKET	1

**Carburetor [Image]**



**Carburetor**

Item No	Part Number	Description	Qty
039	BR150S-205	CARBURETOR	1