



[Baja Web](#) > [Product Information](#) > [Parts Lists](#) > [ATV](#) > [AT90SS-B and AT90SSC-B \(LRPR\)](#)

AT90SS-B and AT90SSC-B (L4PG)

AT90SS-B and AT90SSC-B (L4PG)



Plastics [Image]

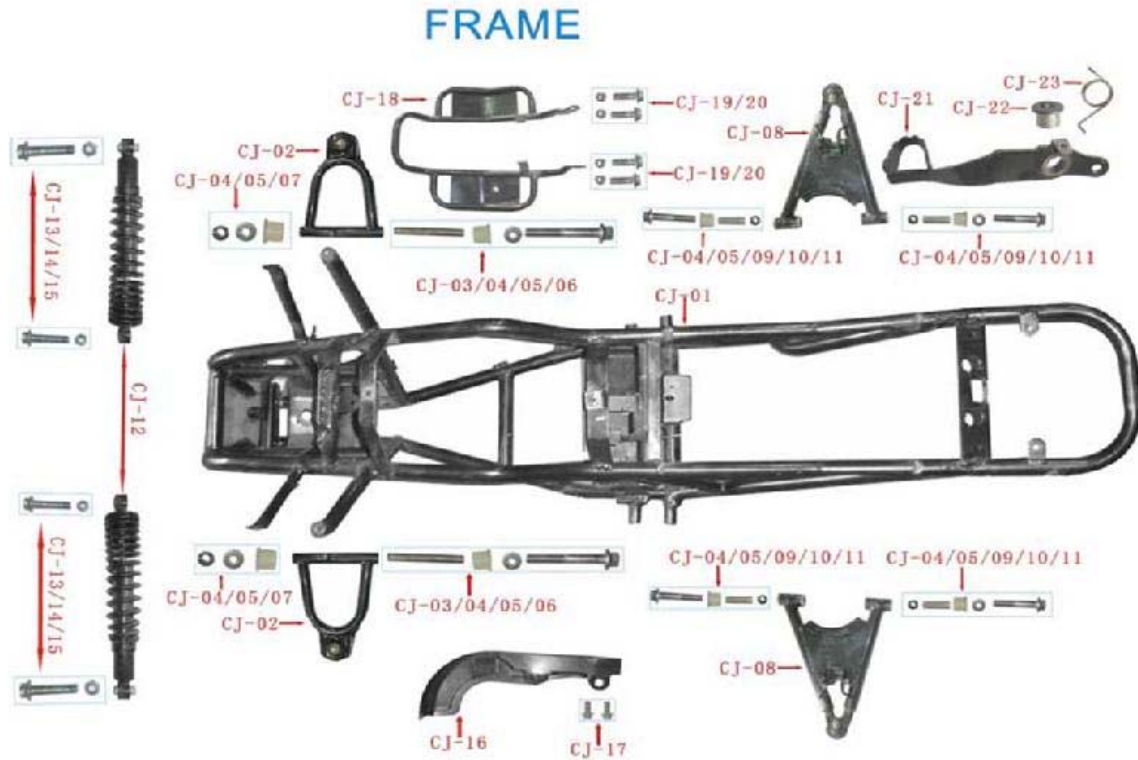


Plastics

Item No	Part Number	Description	Qty
WY-01	B90A001	Gas tank	1
WY-02	B90A002	Gas tank cover	1
WY-03	B90A003	Oil filter	1
WY-04	B90A004	Oil pipe	2
WY-05	B90A005	Seat	1
WY-06	B90A006	Seat lock	1
WY-07	B90A007	L. Foot rest	1
WY-08	B90A008	R. Foot rest	1
WY-09	B90A009	Main plastic	1
WY-10	B90A010	Light cover	1
WY-11	B90A011	Front panel	1
WY-12	B90A012	Bumper cover	1
WY-13	B90A013	Battery box	1
WY-14	B90A014	Bolt	4
WY-15	B90A015	Plane washer	2
WY-16	B90A016	Bolt card	2
WY-17	B90A017	Mushroom head screw	16
WY-18	B90A018	Hexagon flange locknut	16
WY-19	B90A019	Rubber washer	16
WY-20	B90A020	Mushroom head screw	4
WY-21	B90A021	Rubber washer	4
WY-22	B90A022	Mushroom head screw	3
WY-23	B90A023	Nylon Locknut	3
WY-24	B90A024	Rubber washer	3
WY-25	B90A025	Bolt	2
WY-26	B90A026	Nylon Locknut	2
WY-27	B90A027	Mushroom head screw	1
WY-28	B90A028	Rubber washer	1
WY-29	B90A029	Nylon Locknut	1

WY-30	B90A030	Mushroom head screw	8
WY-31	B90A031	Rubber washer	8
WY-32	B90A032	Bolt	2
WY-33	B90A033	Nylon Locknut	2

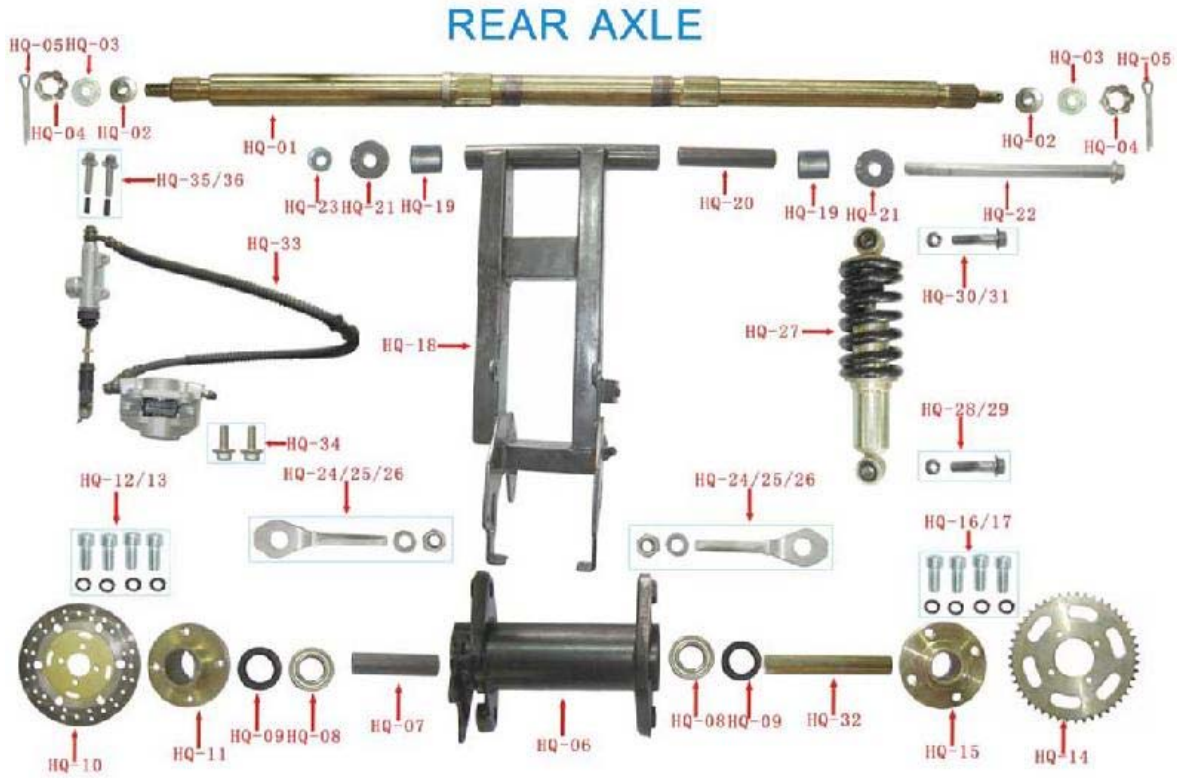
Frame [Image]



Frame

Item No	Part Number	Description	Qty
CJ-01	B90A034	Main Frame	1
CJ-02	B90A035	Upper swing arm	2
CJ-03	B90A036	Inner pipe,upper	2
CJ-04	B90A037	Sleeve	12
CJ-05	B90A038	Dust cover	12
CJ-06	B90A039	Flange bolt	2
CJ-07	B90A040	Hexagon flange locknut	2
CJ-08	B90A041	Lower swing arm	2
CJ-09	B90A042	Inner pipe,lower	4
CJ-10	B90A043	Flange bolt	4
CJ-11	B90A044	Hexagon flange locknut	4
CJ-12	B90A045	Front shock absorber	2
CJ-13	B90A046	Flange bolt	2
CJ-14	B90A047	Flange bolt	2
CJ-15	B90A048	Hexagon flange locknut	4
CJ-16	B90A049	Chain cover	1
CJ-17	B90A050	Flange bolt	2
CJ-18	B90A051	Chain tray	1
CJ-19	B90A052	Flange bolt	4
CJ-20	B90A053	Nylon Locknut	4
CJ-21	B90A054	Brake pedal	1
CJ-22	B90A055	Sleeve	1
CJ-23	B90A056	Spring	1

Rear Axle [Image]

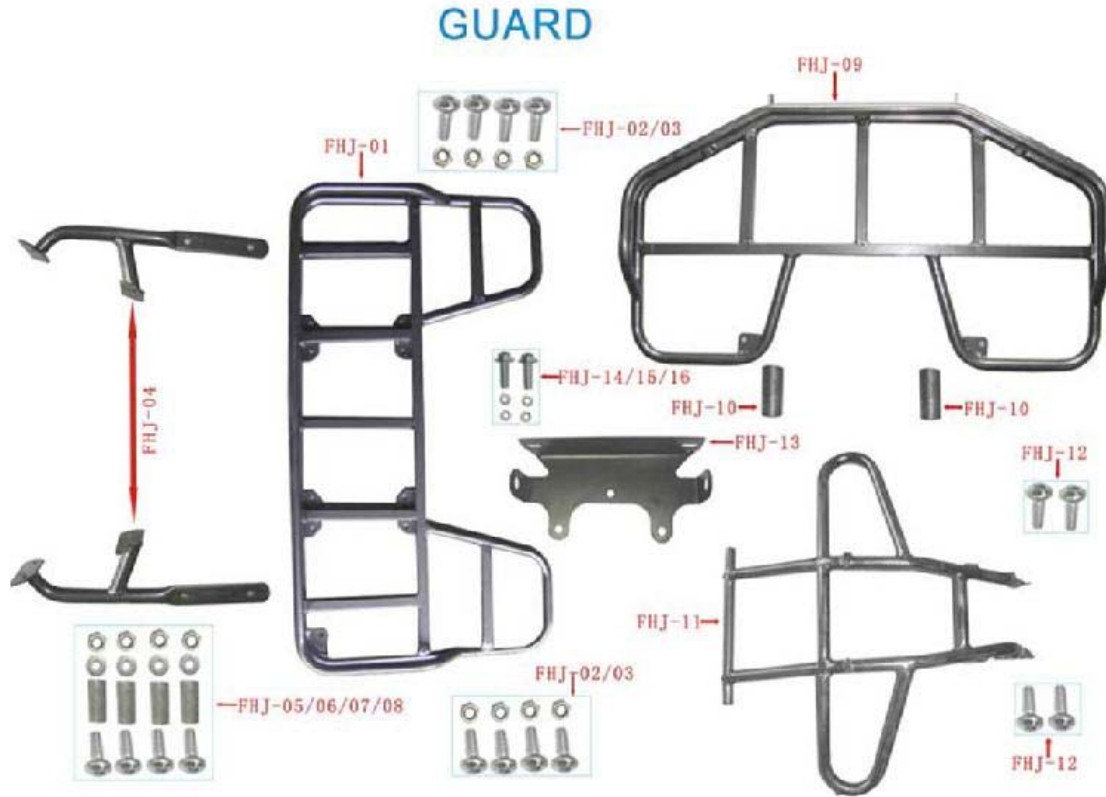


Rear Axle

Item No	Part Number	Description	Qty
HQ-01	B90A057	Rear axle	1
HQ-02	B90A058	Dust cover	2
HQ-03	B90A059	Plate	2
HQ-04	B90A060	Castle nut	2
HQ-05	B90A061	Cotter pin	2
HQ-06	B90A062	Rear axle block	1
HQ-07	B90A063	Inner pipe	1
HQ-08	B90A064	Bearing	2
HQ-09	B90A065	Oil seal	2
HQ-10	B90A066	Brake disk	1
HQ-11	B90A067	Disk fasten	1
HQ-12	B90A068	Bolt	6
HQ-13	B90A069	Washer	4
HQ-14	B90A070	Sprocket disk	1
HQ-15	B90A071	Disk seat	1
HQ-16	B90A072	Washer	4
HQ-17	B90A073	Bolt	6
HQ-18	B90A074	Rear swim arm	1
HQ-19	B90A075	Absorber sleeve	2
HQ-20	B90A076	Inner pipe	1
HQ-21	B90A077	Washer	2
HQ-22	B90A078	Bear	1
HQ-23	B90A079	Hexagon flange locknut	1
HQ-24	B90A080	Adjust	2
HQ-25	B90A081	Tighten nut	2
HQ-26	B90A082	Washer	2
HQ-27	B90A083	Rear shock absorber	1
HQ-28	B90A084	Flange bolt	1
HQ-29	B90A085	Hexagon flange locknut	1
HQ-30	B90A086	Flange bolt	1

HQ-31	B90A087	Hexagon flange locknut	1
HQ-32	B90A088	Sleeve, right	1
HQ-33	B90A089	Disc brake	1
HQ-34	B90A090	Flange bolt	2
HQ-35	B90A091	Flange bolt	2
HQ-36	B90A092	Sleeve	2

Brushguard and Luggage Carrier [Image]

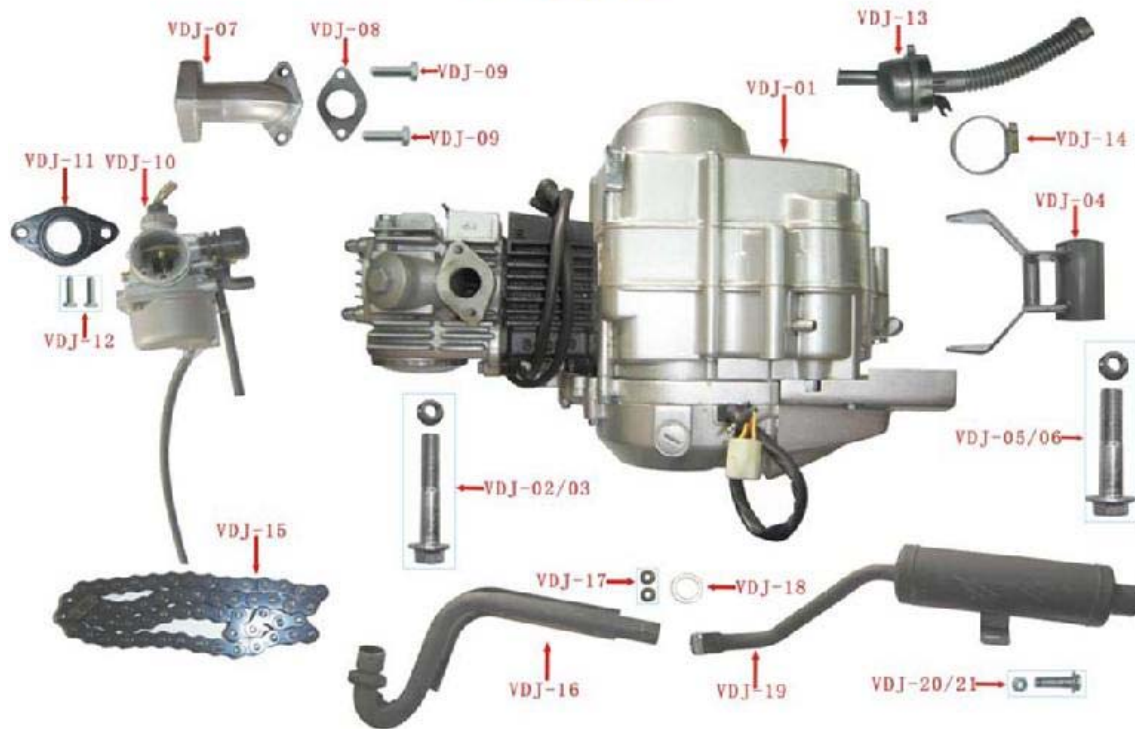


Brushguard and Luggage Carrier

Item No	Part Number	Description	Qty
FHJ-01	B90A093	Rear rack	1
FHJ-02	B90A094	Bolt	8
FHJ-03	B90A095	Nylon locknut	8
FHJ-04	B90A096	Rear rack brace	2
FHJ-05	B90A097	Sleeve	4
FHJ-06	B90A098	Bolt	4
FHJ-07	B90A099	Plate	4
FHJ-08	B90A100	Hexagon flange locknut	4
FHJ-09	B90A101	front rack	1
FHJ-10	B90A102	Sleeve	2
FHJ-11	B90A103	front bumper	1
FHJ-12	B90A104	Bolt	4
FHJ-13	B90A105	Rear light brace	1
FHJ-14	B90A106	Flange bolt	2
FHJ-15	B90A107	Plate	2
FHJ-16	B90A108	Nylon locknut	2

Engine [Image]

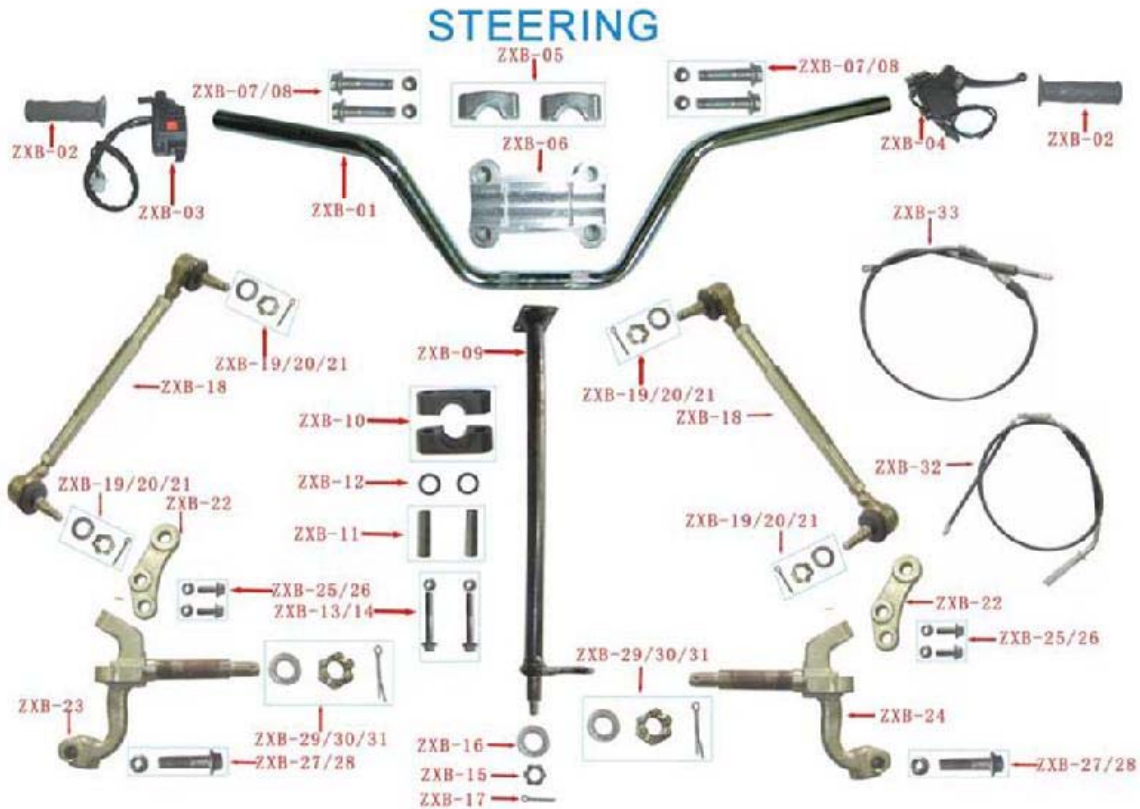
ENGINE



Engine

Item No	Part Number	Description	Qty
FDJ-01	B90A109	Engine	1
FDJ-02	B90A110	Flange bolt	1
FDJ-03	B90A111	Hexagon flange locknut	1
FDJ-04	B90A112	Hook	1
FDJ-05	B90A113	Flange bolt	1
FDJ-06	B90A114	Hexagon flange locknut	1
FDJ-07	B90A115	Intake manifold	1
FDJ-08	B90A116	Mat	1
FDJ-09	B90A117	Hexagon bolt	2
FDJ-10	B90A118	Carburetor	1
FDJ-11	B90A119	Rubber washer	2
FDJ-12	B90A120	Hexagon bolt	2
FDJ-13	B90A121	Air- cleaner	1
FDJ-14	B90A122	Cliper	1
FDJ-15	B90A123	Chain	1
FDJ-16	B90A124	Front, manifold	1
FDJ-17	B90A125	Flange locknut	2
FDJ-18	B90A126	Gasket,exhaust pipe	1
FDJ-19	B90A127	Rear, manifold	1
FDJ-20	B90A128	Flange bolt	1
FDJ-21	B90A129	Rivet	1

Steering [Image]

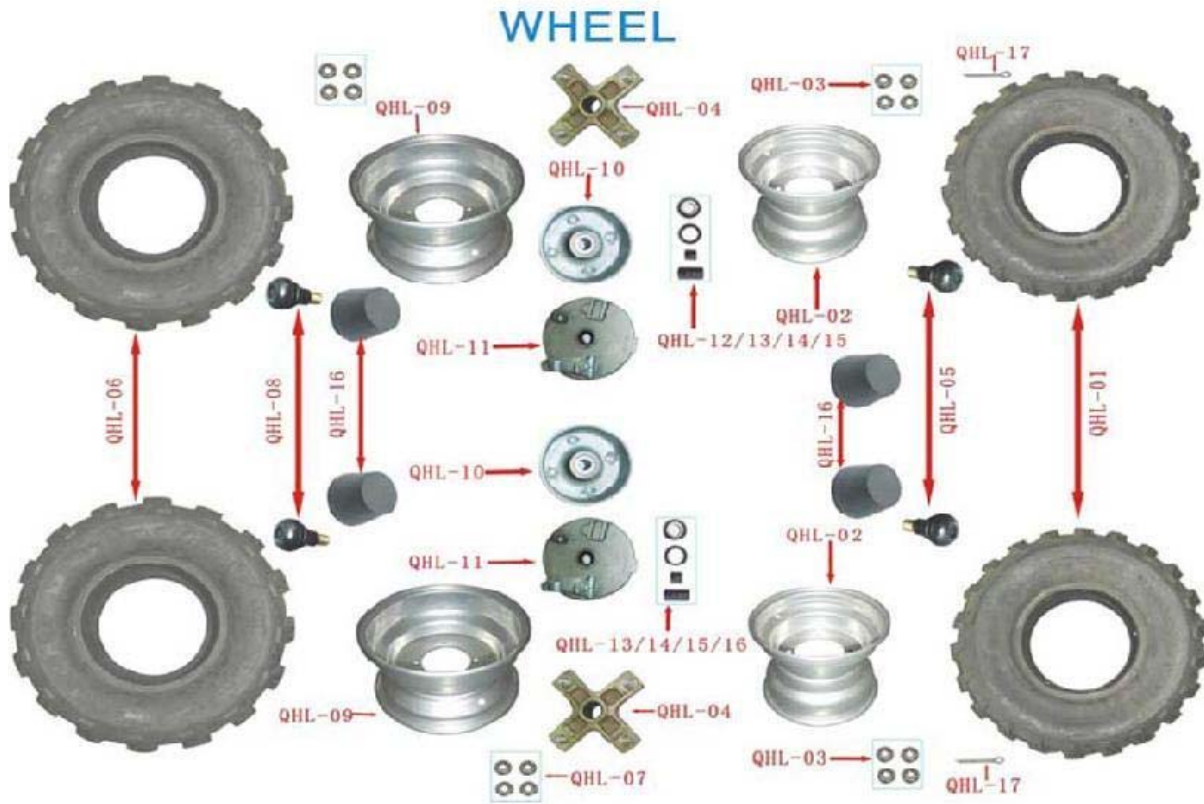


Steering

Item No	Part Number	Description	Qty
ZXB-01	B90A130	Steering bar	1
ZXB-02	B90A131	Handlebar cap	2
ZXB-03	B90A132	Switch assy	1
ZXB-04	B90A133	Accelerate	1
ZXB-05	B90A134	Clamp,upper	2
ZXB-06	B90A135	Clamp,lower	1
ZXB-07	B90A136	Flange bolt	4
ZXB-08	B90A137	Nylon locknut	4
ZXB-09	B90A138	Steering Pole	1
ZXB-10	B90A139	Clamp,steering	2
ZXB-11	B90A140	Inner pipe	2
ZXB-12	B90A141	Dust ring	2
ZXB-13	B90A142	Flange bolt	2
ZXB-14	B90A143	Nylon locknut	2
ZXB-15	B90A144	Castle nut	1
ZXB-16	B90A145	Plate	1
ZXB-17	B90A146	Cotter pin	1
ZXB-18	B90A147	Tie-rod	2
ZXB-19	B90A148	Washer	2
ZXB-20	B90A149	Castle nut	4
ZXB-21	B90A150	Cotter pin	4
ZXB-22	B90A151	Steering joint	2
ZXB-23	B90A152	Steering Knuckle Pin (L)	1
ZXB-24	B90A153	Steering Knuckle Pin (R)	1
ZXB-25	B90A154	Flange bolt	4
ZXB-26	B90A155	Nylon locknut	4
ZXB-27	B90A156	Flange bolt	2
ZXB-28	B90A157	Hexagon flange locknut	2
ZXB-29	B90A158	Castle nut	2

ZXB-30	B90A159	Plate	2
ZXB-31	B90A160	Cotter pin	2
ZXB-32	B90A161	Brake cable	2
ZXB-33	B90A162	Throttle cable	1

Wheel [Image]

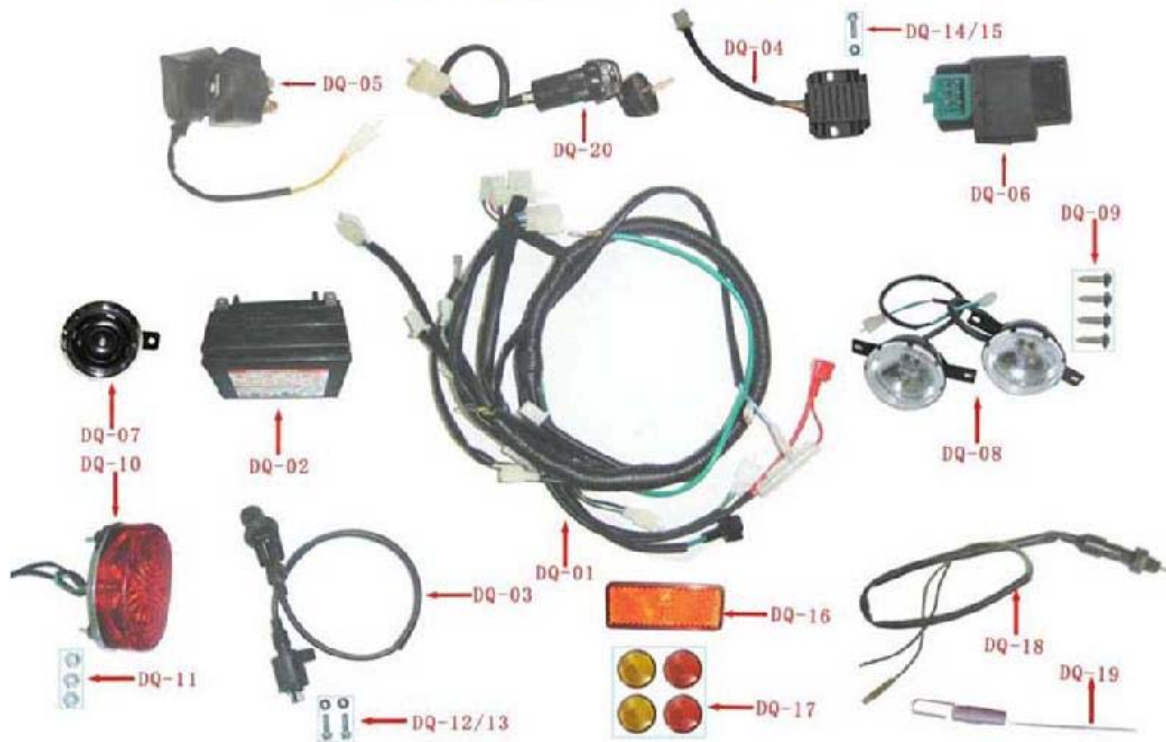


Wheel

Item No	Part Number	Description	Qty
QHL-01	B90A163	Rear Tire	2
QHL-02	B90A164	Rear rim	2
QHL-03	B90A165	Hexagon flange locknut	8
QHL-04	B90A166	Joint, rear tire	2
QHL-05	B90A167	Valve, rear tire	2
QHL-06	B90A168	Front tire	2
QHL-07	B90A169	Hexagon flange locknut	8
QHL-08	B90A170	Valve, front tire	2
QHL-09	B90A171	Front rim	2
QHL-10	B90A172	Front drum brake	2
QHL-11	B90A173	Brake cover	2
QHL-12	B90A174	Bear	4
QHL-13	B90A175	Oil seal	2
QHL-14	B90A176	Out sleeve	2
QHL-15	B90A177	Inner sleeve	2
QHL-16	B90A178	Dust cover	4

Electrical [Image]

ELECTRIC SYSTEM

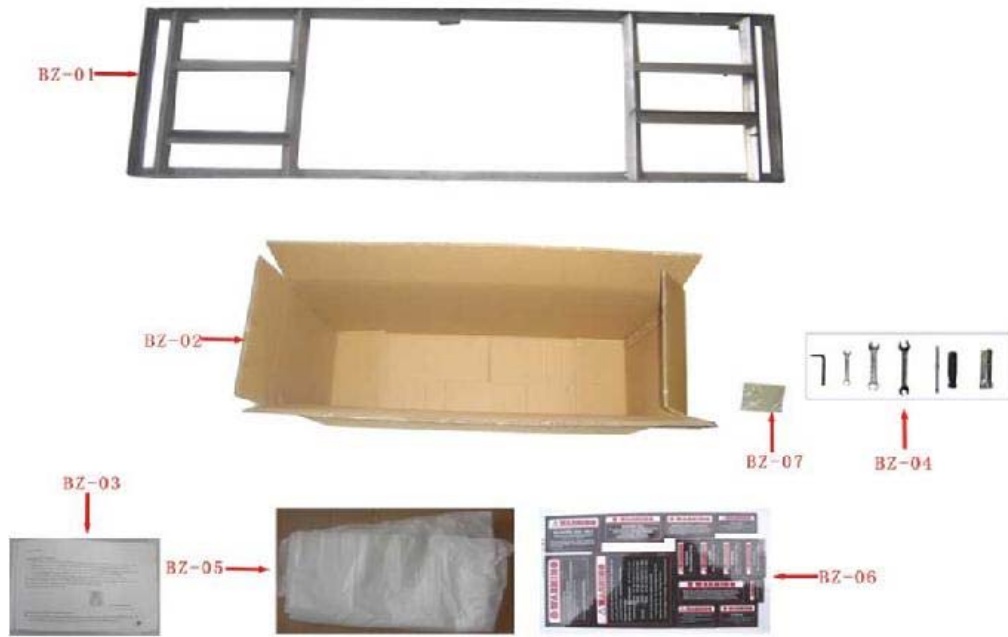


Electrical

Item No	Part Number	Description	Qty
DQ-01	B90A179	Wire cable	1
DQ-02	B90A180	Battery	1
DQ-03	B90A181	Coil	1
DQ-04	B90A182	Rectifier	1
DQ-05	B90A183	Relay	1
DQ-06	B90A184	CDI	2
DQ-07	B90A185	Horn	1
DQ-08	B90A186	Front light	1
DQ-09	B90A187	Bolt	4
DQ-10	B90A188	Rear light	1
DQ-11	B90A189	Hexagon flange locknut	3
DQ-12	B90A190	Flange bolt	1
DQ-13	B90A191	Nylon locknut	1
DQ-14	B90A192	Flange bolt	1
DQ-15	B90A193	Nylon locknut	1
DQ-16	B90A194	Rear reflect	1
DQ-17	B90A195	Reflect	4
DQ-18	B90A196	Brake switch	1
DQ-19	B90A197	Spring	1
DQ-20	B90A198	SWITCH, IGNITION	1

Packaging [Image]

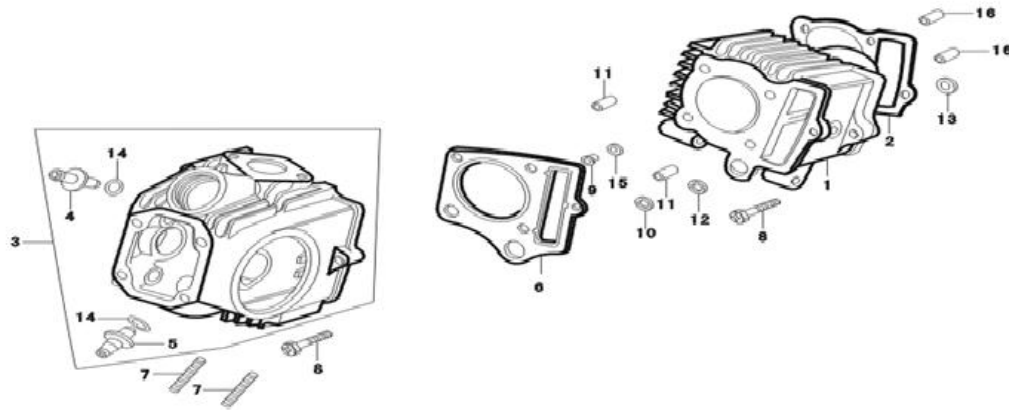
PACKING



Packaging

Item No	Part Number	Description	Qty
BZ-03	B90A-199	User's manual	1
BZ-04	B90A-200	Tool	1
BZ-06	B90A201	Sticker	1

Cylinder Head [Image]

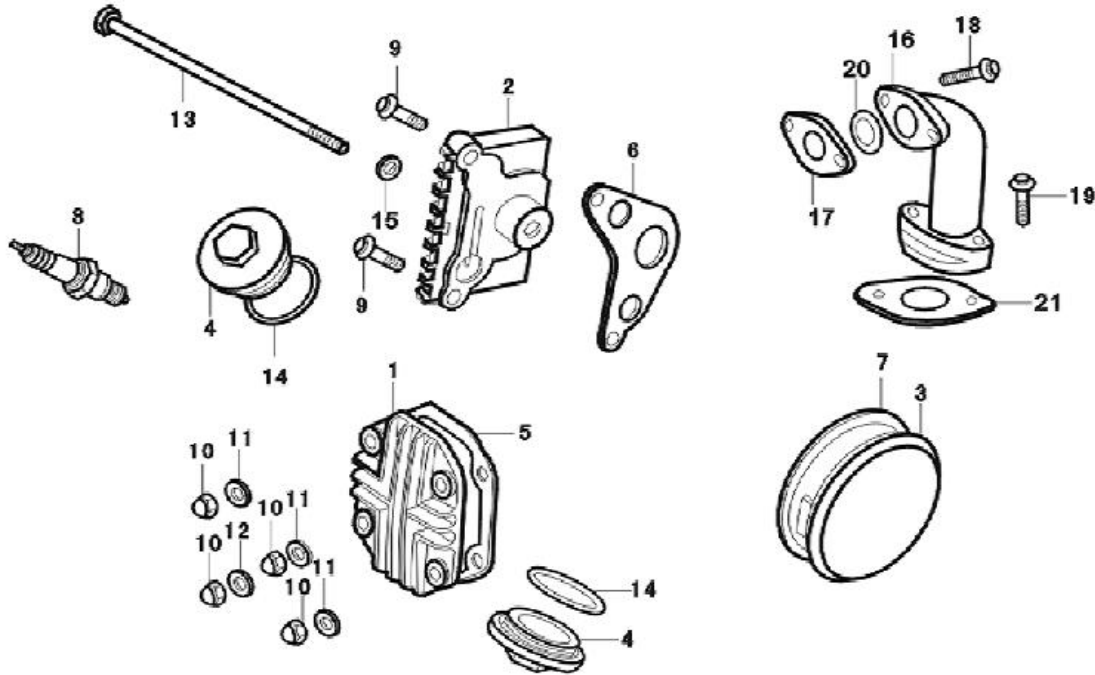


Cylinder Head

Item No	Part Number	Description	Qty
01	B90A202	CYLINDER ASSY.	1
02	B90A203	GASKET,CYLINDER	1
03	B90A204	HEAD ASSY., CYLINDER	1
04		PIPE.IN VALVE	1
05		PIPE.EX VALVE	1
06	B90A207	GASKET,CYLINDER HEAD	1
07	B50A180	STUD	2
08	B50A181	BOLT	2
09	B50A182	COLLAR	1
10	B50A183	WASHER	1
11	B50A184	PIN	2

12	B50A185	O-RING	1
13	B50A186	RECTANGULAR RING	1
14		O-RING	2
15	B50A188	RECTANGULAR RING	1
16	B50A189	CYLINDER ASSY.	2

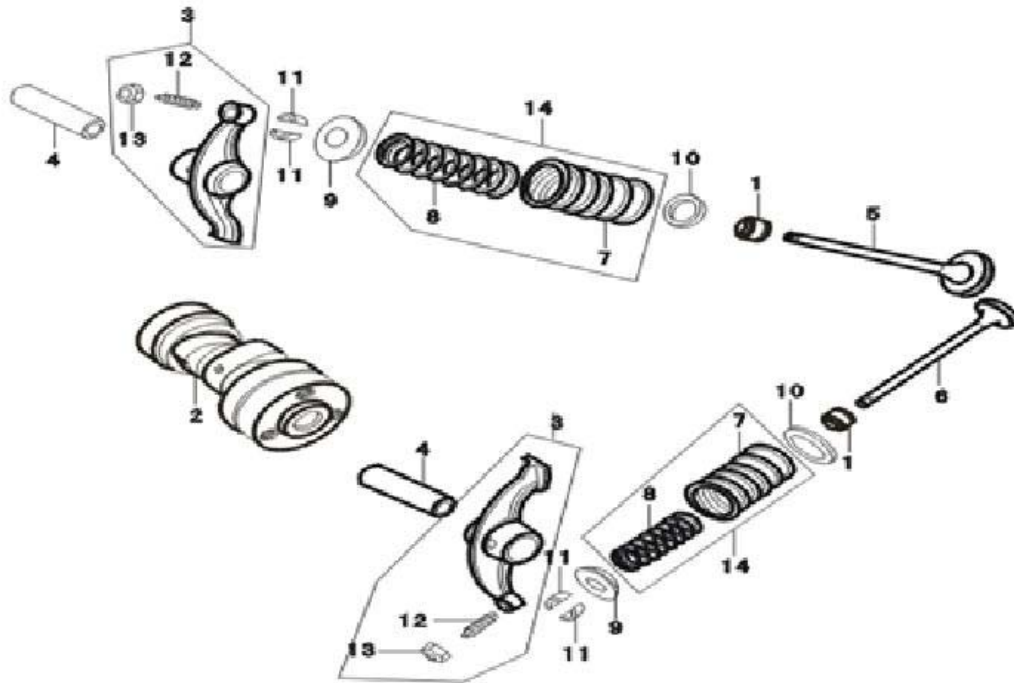
Cylinder Head Cover [Image]



Cylinder Head Cover

Item No	Part Number	Description	Qty
01	B90A218	COVER,CYLINDER HEAD	1
02	B50A191	COVER,R.CYLINDER HEAD SIDE	1
03	B50A192	COVER,L.CYLINDER HEAD SIDE	1
04	B50A193	VALVE CAP	2
05	B50A194	GASKET,CYLINDER HEAD COVER	1
06	B50A195	GASKET,R.CYLINDER HEAD SIDECOVER	1
07	B50A196	GASKET,L.CYLINDER HEAD SIDE COVER	1
08	B50A197	SPARK PLUG	1
09	B50A198	BOLT	2
10	B50A199	NUT,CYLINDER HEAD COVER	4
11	B50A200	GASKET	3
12	B50A201	GASKET	1
13	B50A202	BOLT M6×110	1
14	B50A203	O-RING	2
15	B50A204	GASKET	1
16	B90A233	IN VALVE	1
17	B90A234	INSULATOR CABURETTOR	1
18	B90A235	BOLT,HEXAGONAL WITH FLANGE	2
19	B90A236	BOLT,HEXAGONAL WITH FLANGE	2
20	B90A237	SEAL	1
21	B90A238	GASKET, CARBURETTOR	1

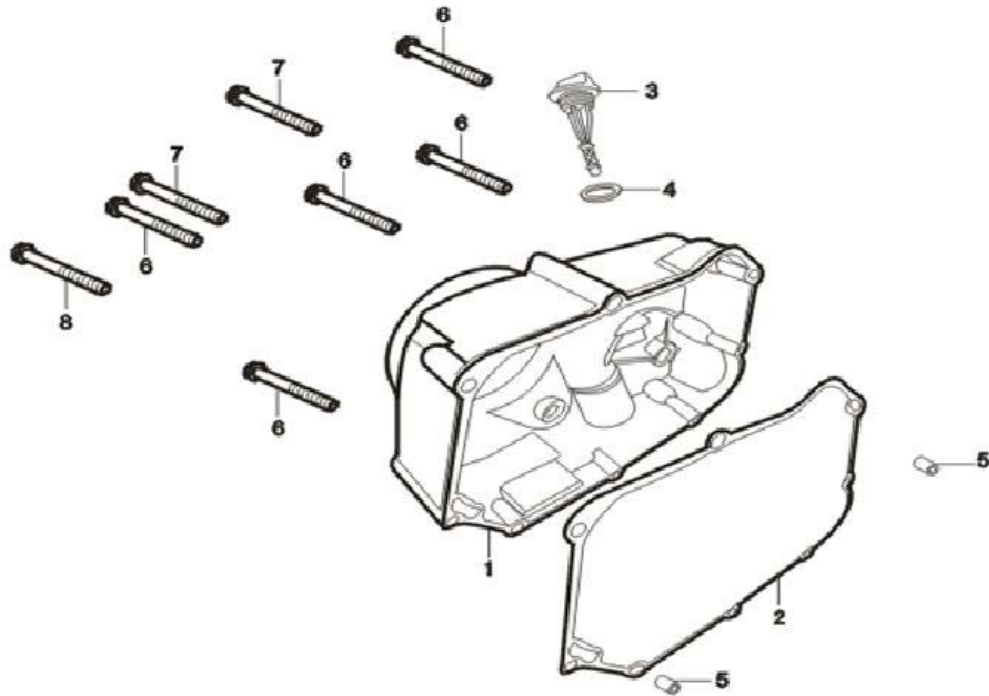
Camshaft [Image]



Camshaft

Item No	Part Number	Description	Qty
01	B50A205	OIL SEAL, VALVE	2
02	B50A206	CAMSHAFT COMP	1
03	B50A207	ARM, VALVE ROCKER	2
04	B50A208	SHAFT, VALVE ROCKER ARM	2
05	B90A243	VALVE, IN.	1
06	B90A244	VALVE, EX.	1
07	B50A211	SPRING, VALVE OUTER	2
08	B50A212	SPRING, VALVE INNER	2
09	B50A213	RETAINER, VALVE INNER SPRING	2
10	B50A214	SEAT, VALVE OUTER SPRING	2
11	B50A215	COTTER, VALVE	4
12	B50A216	SCREW, TAPPET ADJUSTING	2
13	B50A217	NUT, TAPPET ADJUSTING	2
14	B50A218	SPRING VALVE, ASSY	2

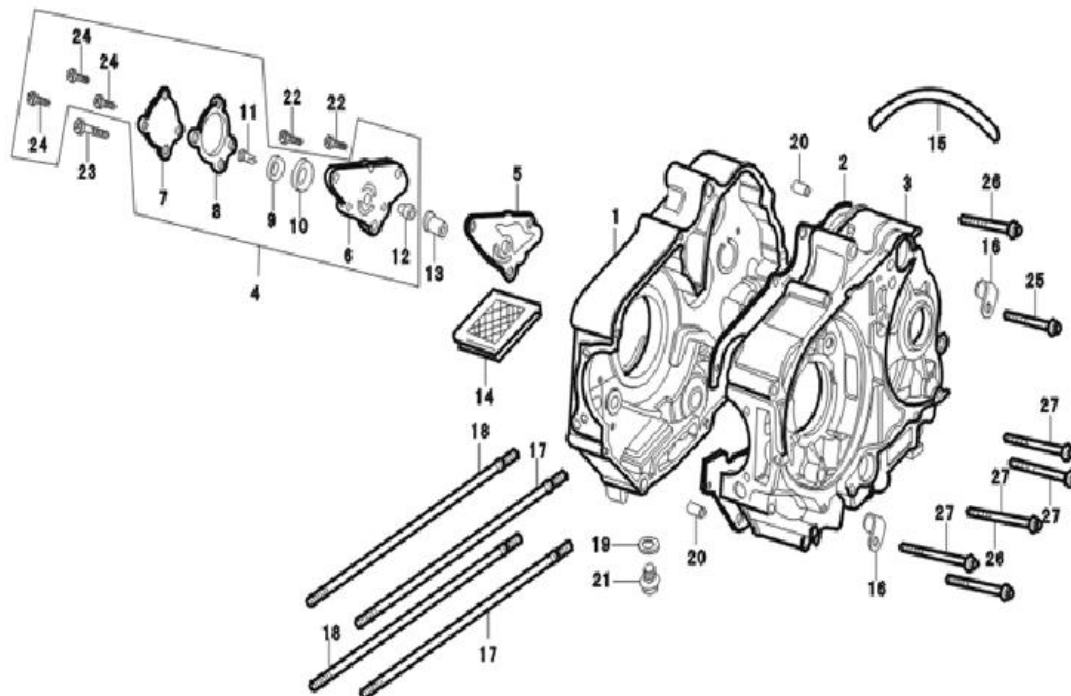
Right Crankcase Cover [Image]



Right Crankcase Cover

Item No	Part Number	Description	Qty
01	B90A253	COVER COMP.,R.CRANKCASE	1
02	B50A220	GASKET,R.CRANKCASE COVER	2
03	B50A221	GAUGE,OIL LEVEL	1
04	B50A222	O-RING	1
05	B50A223	PIN	2
06	B50A224	SCREW	5
07	B50A225	SCREW	2
08	B50A226	SCREW	1

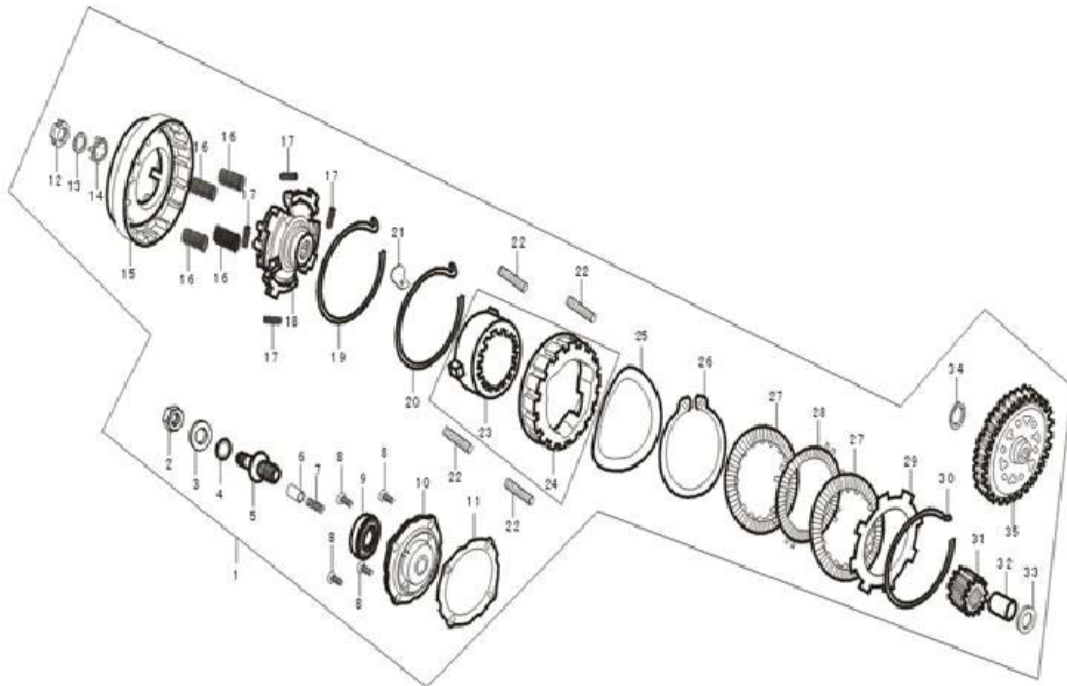
Crankcase [Image]



Crankcase

Item No	Part Number	Description	Qty
01	B50A227	CRANKCASE COMP.,R.	1
02	B50A228	GASKET,CRANKCASE	1
03	B50A229	CRANKCASE COMP.,L.	1
04	B50A230	OIL PUMP ASSY.	1
05	B50A231	GASKET,OIL PUMP	1
06		BODY,OIL PUMP	1
07		COVER,OIL PUMP	1
08		GASKET,OIL PUMP COVER	1
09		ROTOR,OIL PUMP INNER	1
10		ROTOR,OIL PUMP OUTER	1
11		SPINDLE,OIL PUMP	1
12		SLEEVE,OIL PUMP	1
13	B50A239	BUSH,OIL PUMP SPROCKET SPINDLE	1
14	B50A240	SCREEN,OIL FILTER	1
15	B50A241	TUBE, BREATHER	1
16	B50A242	CLAMP,BREATHER TUBE	2
17	B90A277	BOLT A,CYLINDER STUD	2
18	B90A278	BOLT B,CYLINDER STUD	2
19	B50A245	WASHER,DRAIN PLUG	1
20	B50A246	PIN,KNOCK	2
21	B50A247	BOLT,DRAIN PLUG	1
22	B50A248	SCREW	2
23	B50A249	SCREW	1
24		SCREW	3
25	B50A251	BOLT,FLANGE	1
26	B50A252	BOLT,FLANGE	2
27	B50A253	BOLT,FLANGE	3

Clutch [Image]

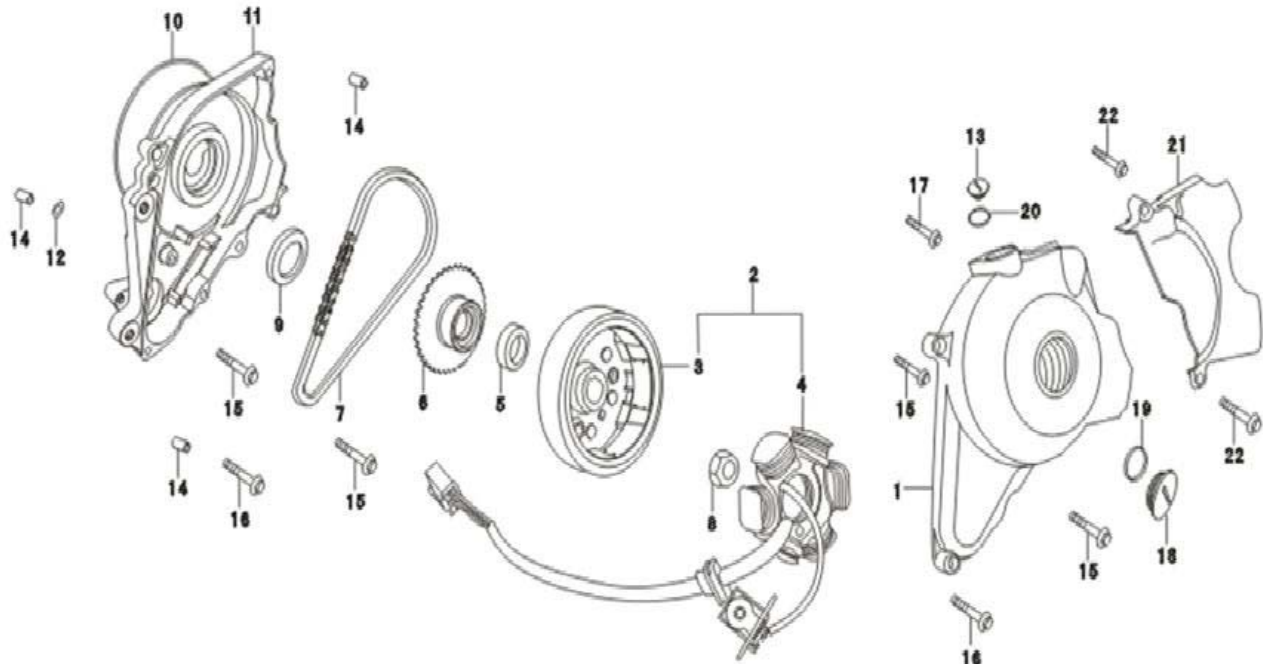


Clutch

Item No	Part Number	Description	Qty
01	B50A254	CLUTCH ASSY	1
02	B50A255	NUT	1
03	B50A256	GASKET	1

04	B50A257	O-RING	1
05	B50A258	VALVE,ADJUSTING	1
06	B50A259	PIPE,OIL IN	1
07	B50A260	SPRING,OIL IN	1
08	B50A261	BOLT	4
09	B50A262	BEARING	1
10	B50A263	END COVER,CLUTCH	1
11	B50A264	GASKET,CLUTCH END COVER	1
12	B50A265	NUT	1
13	B50A266	WASHER,DISC	1
14	B50A267	WASHER	1
15	B50A268	OUTER COVER ASSY.,CLUTCH	1
16	B50A269	SPRING,CLUTCH	4
17	B50A270	DAMPER SPRING,CLUTCH	4
18	B50A271	DRIVING PLATE	1
19	B50A272	CIRCLIP	1
20		CIRCLIP	1
21		BLOCK	1
22	B50A276	SPRING	4
23		HUB ASSY. CLUTCH	1
24	B50A278	BOSS,CLUTCH	1
25		WASHER	1
26		SPRING, COLLAR	1
27	B50A281	DISK,CLUTCH FRICTION	2
28	B50A282	PLATE,CLUTCH LOWER	1
29	B50A283	PLATE,CLUTCH UPPER	2
30	B50A284	CIRCLIP	1
31	B50A285	GEAR,PRIMARY DRIVE	1
32	B50A286	BUSH	1
33		WASHER	1
34	B50A288	CIRCLIP	1
35	B50A289	PRIMARY DRIVEN GEAR COMP	1

Left Crankcase Cover [Image]

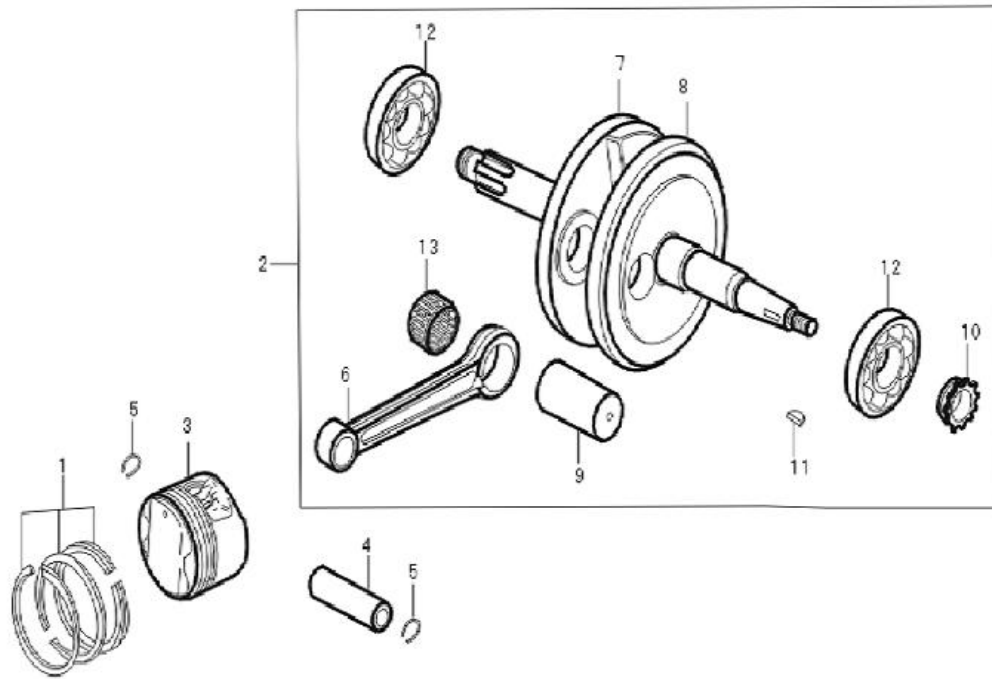


Left Crankcase Cover

Item No	Part Number	Description	Qty
---------	-------------	-------------	-----

01	B90A323	COVER,L.CRANKCASE	1
02	B90A324	GENERATOR	1
03	B50A292	FLYWHEEL COMP	1
04	B90A326	STATOR COMP.	1
05	B50A294	OIL SEAL	1
06	B50A295	SPROCKET COMP,STARTING	1
07	B50A296	CHAIN,STARTING	1
08	B50A297	NUT	1
09	B50A298	OIL SEAL	1
10	B90A332	O-RING	1
11	B50A300	DISK COVER	1
12	B50A301	O-RING	1
13	B50A302	SMALL CAP EYEHOLE	1
14	B50A303	PIN,KNOCK	3
15	B50A304	BOLT	4
16	B50A305	BOLT	1
17	B50A306	BOLT	2
18	B50A307	BIG CAP EYEHOLE	1
19	B50A308	O-RING	1
20	B50A309	O-RING	1
21	B50A310	BACK,L.COVER	1
22	B50A311	BOLT	2

Crankshaft [Image]

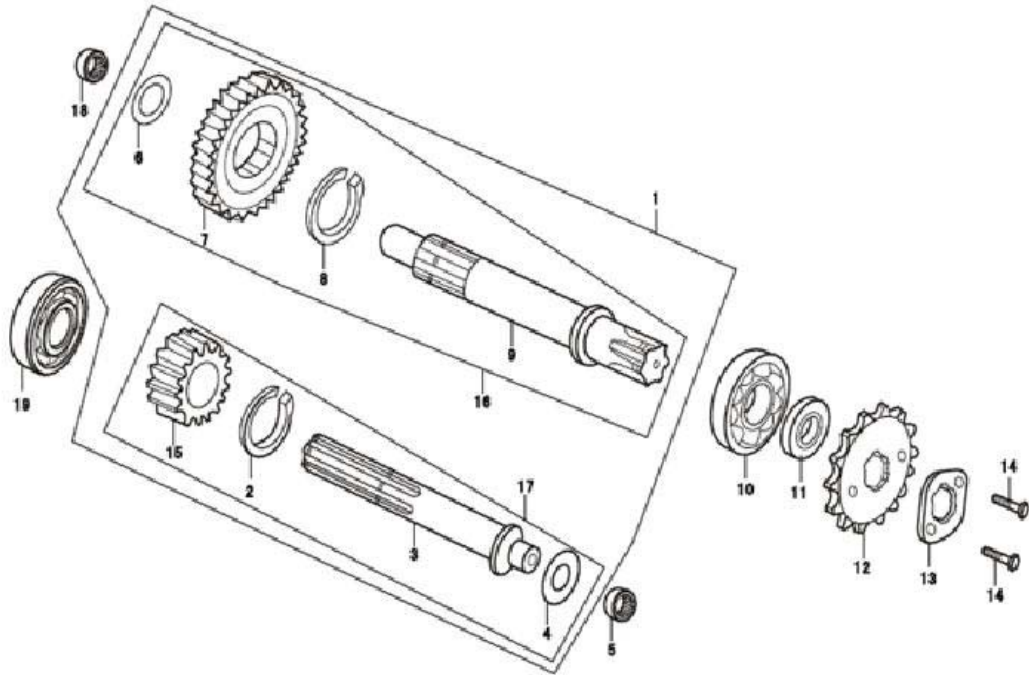


Crankshaft

Item No	Part Number	Description	Qty
01	B90A345	PISTON RING SET	1
02	B90A346	CRANKSHAFT COMP.	1
03	B90A347	PISTON	1
04	B50A315	PIN,PISTON	1
05	B50A316	CLIP,PISTON PIN	2
06	B90A350	ROD,CONNECTING	1
07	B90A351	CRANKSHAFT COMP.,R.	1
08	B90A352	CRANKSHAFT COMP.,L.	1
09	B90A353	PIN,CRANK	1
10	B50A321	SPROCKET,TIMING	1
11	B50A322	KEY,WOODRUFF	1

12	BEARING 6304	2
13	NEEDLE BEARING	1

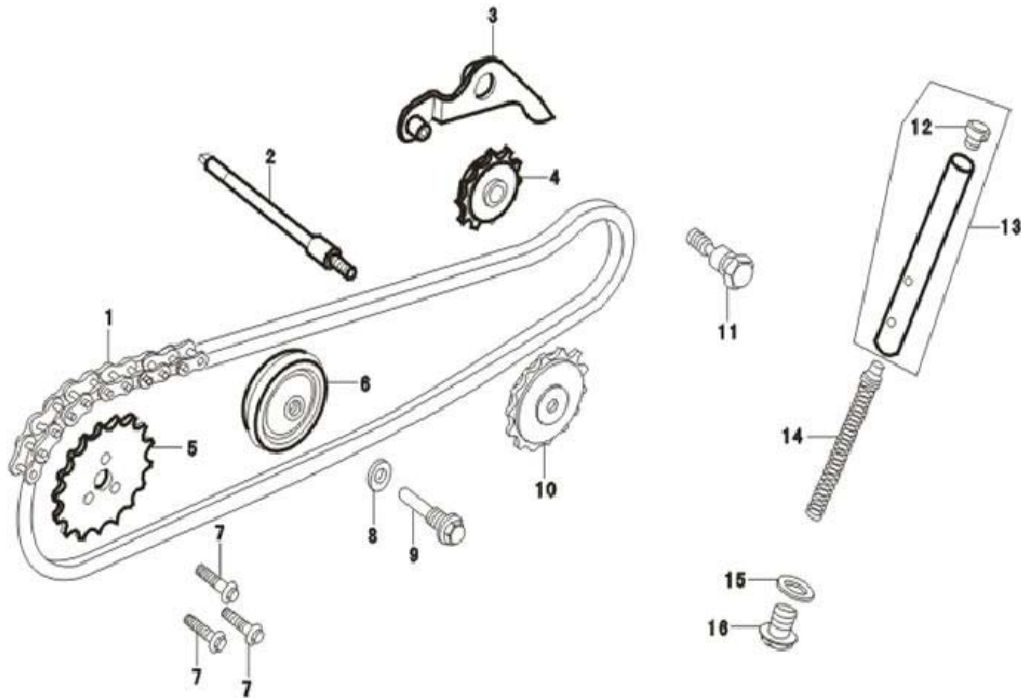
Mainshaft [Image]



Mainshaft

Item No	Part Number	Description	Qty
01	B50A325	TRANSMISSION ASSY	1
02	B50A326	CIRCLIP	1
03		MAINSHAFT	1
04	B50A328	GASKET	1
05	B50A329	BEARING	1
06	B50A330	GASKET	1
07		DRIVING GEAR,1ST COUNTERSHAFT	1
08	B50A332	CIRCLIP	1
09		COUNTERSHAFT	1
10	B50A334	BEARING	1
11	B50A335	OIL SEAL	1
12	B90A369	SPROCKET,DRIVE	1
13	B50A337	PLATE,FIXING	1
14	B50A338	BOLT M6×8	2
15		DRIVING GEAR,1ST MAINSHAFT	1
16		COUNTERSHAFT ASSY	1
17	B50A341	MAINSHAFT ASSY	1
18	B50A342	BEARING	1
19	B50A343	BEARING	1

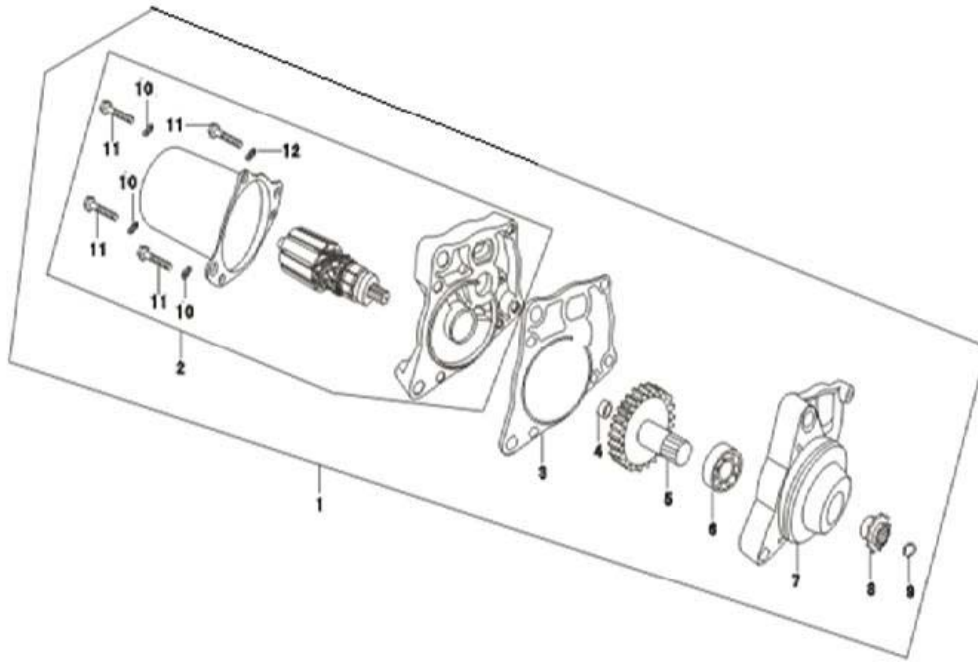
Chain Tensioner [Image]



Chain Tensioner

Item No	Part Number	Description	Qty
01	B50A344	CHAIN,CAM	1
02	B50A345	SPINDLE,CAM CHAIN GUIDE SPROCKET	1
03	B50A346	ARM COMP.,CAM CHAIN TENSIONER	1
04	B50A347	ROLLER,CAM CHAIN TENSIONER	1
05	B50A348	SPROCKET,CAM	1
06	B50A349	ROLLER COMP.,CAM CHAIN GUIDE	1
07	B50A350	BOLT,KNOCK	3
08	B50A351	WASHER,8MM	1
09	B50A352	PIN, CAM CHAIN GUIDE ROLLER	1
10	B50A353	SPROCKET,OIL PUMP	1
11	B50A354	PIVOT,CAM CHAIN TENSIONER	1
12		HEAD,CAM CHAIN TENSIONER PUSH ROD	1
13	B50A356	ROD COMP.,CAM CHAIN TENSIONER PUSH	1
14	B50A357	SPRING,CAM CHAIN TENSIONER	1
15	B50A358	WASHER,SEALING	1
16	B50A359	BOLT,SEALING	1

Kick Starter Spindle [Image]



Kick Starter Spindle

Item No	Part Number	Description	Qty
01	B50A360	MOTOR ASSY.,STARTER	1
02		MOTOR, STARTER	1
03		CUSHION	1
04		GASKET	1
05		GEAR	1
06		BEARING	1
07		END CAP	1
08		DRIVING CHAIN WHEEL	1
09		CIRCLIP	1
10	B50A369	HARNESS,STARTING MOTOR	4
11		SCREW	4