



Product Information

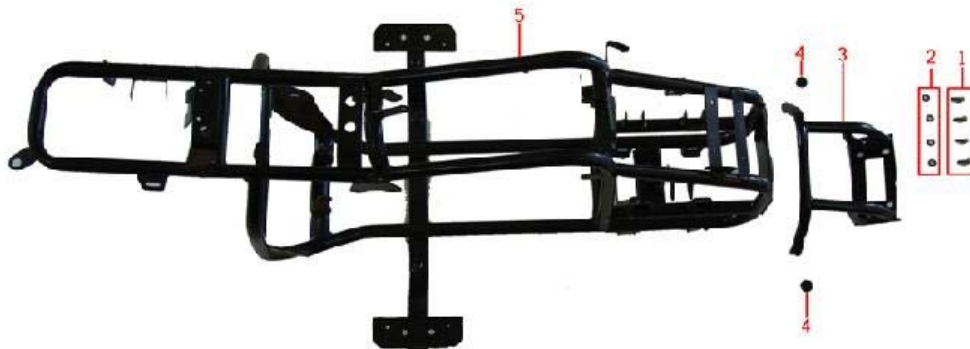
Baja Web > Product Information > Parts Lists > ATV > AT50SS-BR and AT50SSC-BR Buyang (L4PG)

AT50SS-BR and AT50SSC-BR Buyang (L4PG)

AT50SS-BR and AT50SSC-BR Buyang (L4PG)



Frame [Image]



Frame

Item No	Part Number	Description	Qty
---------	-------------	-------------	-----

01	B50A002	Bolt M6x16	4
02	B50A003	Spring washer	4
03	B50A004	Bumper	1
04	B50A005	Bumper block	2
05	B50A006	Frame	1

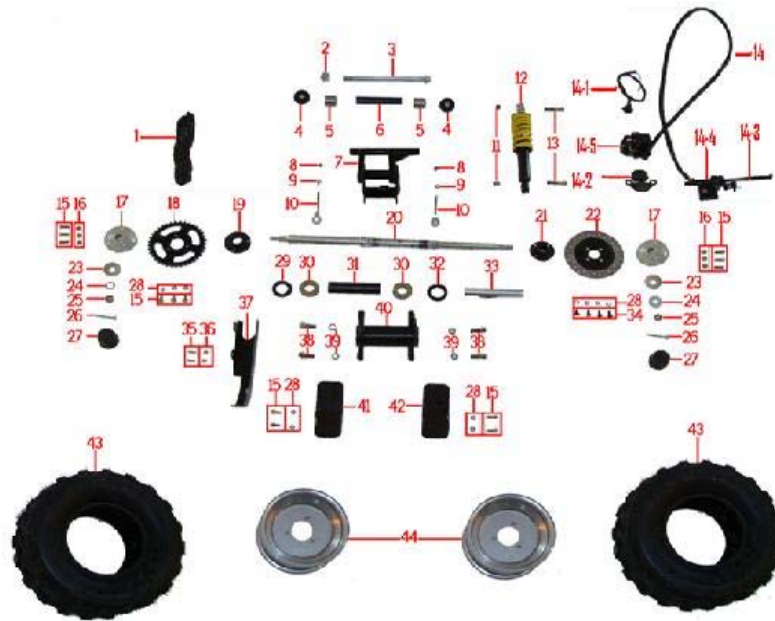
Plastics [Image]



Plastics

Item No	Part Number	Description	Qty
01	B50A007	Headlight	1
01-1	B50A008	Headlight bulb(small)	1
01-2	B50A009	Headlight bulb(large)	1
02	B50A010	Nut M6	15
03	B50A011	Rubber washer 307	13
04	B50A012	bolt M6*25	1
05	B50A013	Bolt M6x16	4
06	B50A014	Cross recess head screw ST4.2x14	6
07	B50A015	Front panel	6
08	B50A016	bolt M6*16	12
09	B50A017	Washer 6	12
10	B50A018	Footrest left	1
11	B50A019	Left side panel	1
12	B50A020	Main body cover	1
13	B50A021	Right side panel	1
14	B50A022	Footrest right	1
15	B50A023	Seat	1
16	B50A024	Taillight	1
17	B50A025	Rear reflector	1
18	B50A026	Fuel tank assy(with cap)	1
18-2	B50A028	Fuel tank cap	1
19	B50A029	Fuel line	1

Rear Swing Arm [Image]

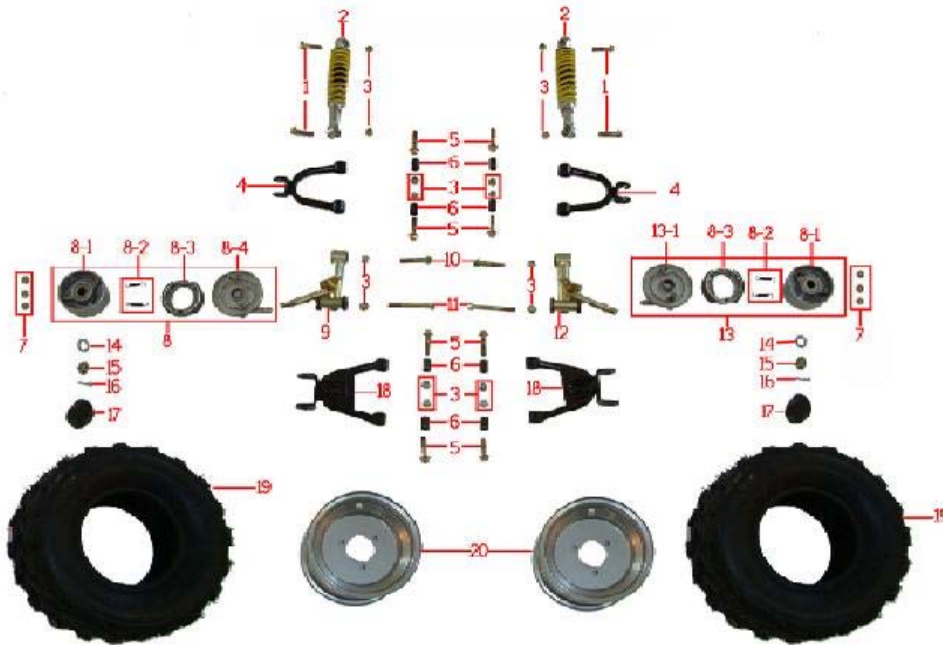


Rear Swing Arm

Item No	Part Number	Description	Qty
01	B50A030	Chain 428-80	1
02	B50A031	Nut M14x1.5	1
03	B50A032	Bolt M14x1.5x285	1
04	B50A033	Washer	2
05	B50A034	Washer for rear shock	2
06	B50A035	Sleeve for swingarm	1
07	B50A036	Rear swingarm	
08	B50A037	Nut M8	
09	B50A038	Washer 8	2
10	B50A039	Chain adjuster bolt	2
11	B50A040	Nut M10x1.25	2
12	B50A041	Rear shock absorber	
13	B50A042	Bolt M10x1.25x42	2
14	B50A043	hydraulic brake Hose	1
14-1	B50A044	cable for brake switch	1
14-2	B50A045	Brake pads	
14-3	B50A168	Brake lever only	1
14-4	B50A169	resevoir	1
14-5	B50A170	calliper	1
15	B50A046	Bolt M8x20	6
16	B50A047	Nut M8	6
17	B50A048	Rear hub	1
18	B50A049	Sprocket 428-37	1
19	B50A050	Seat for the sprocket	1
20	B50A051	Rear axle	1
21	B50A052	Seat for brake disc	1
22	B50A053	Brake disc	1
23	B50A054	Washer for dustproof cover	2
24	B50A055	Washer 14x28x2	2
25	B50A056	Slotted nut M14x1.5	2
26	B50A057	Cotter pin 2.5x30	2
27	B50A058	Dustproof cover	2
28	B50A059	Spring washer 8	11
29	B50A060	Seal 52x35x8	1
30	B50A061	Bearing 6205	2

31	B50A062	Swingarm Sleeve (right)	1
32	B50A063	Seal 52x32x8	1
33	B50A064	Swingarm sleeve(left)	1
34	B50A065	screw M8x16	4
35	B50A066	bolt M6x16	2
36	B50A067	Nut M6	2
37	B50A068	Upper Sprocket cover	1
38	B50A069	bolt M12x1.25x30	4
39	B50A070	Spring washer 12	4
40	B50A071	Seat of rear swingarm	
41	B50A072	Lower sprocket cover	1
42	B50A073	Lower brake disc cover	1
43	B50A074	Tire	2
44	B50A075	Rim 6"	2

Front Suspension [Image]

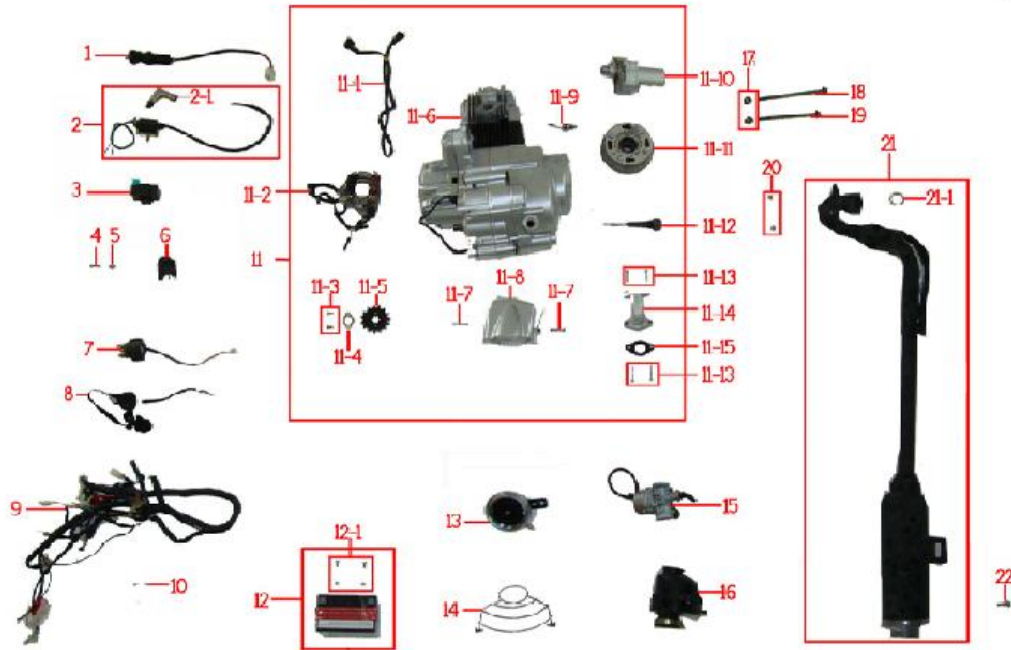


Front Suspension

Item No	Part Number	Description	Qty
01	B50A076	Bolt M10x1.25x42	4
02	B50A077	Front shock absorber	2
03	B50A078	Nut M10x1.25	16
04	B50A079	Up A-arm	2
05	B50A080	Bolt M10x1.25x45	8
06	B50A081	Sleeve	8
07	B50A082	Nut M8	6
08	B50A083	Left brake drum assy	1
08-1	B50A084	Front drum brake body	2
08-2	B50A085	Sping for front drum brake	4
08-3	B50A086	Brake shoes for front drum	2
08-4	B50A087	Left brake drum cover	1
09	B50A088	Left spindle	4
10	B50A089	Bolt M10x1.25x55	1
11	B50A090	Bolt M10x1.25x85	6
12	B50A091	Right Spindle	1
13	B50A092	Right brake drum assy	2
13-1	B50A093	Right brake drum cover	2

14	B50A094	Washer 14x28x2	2
15	B50A095	Slotter nut M14x1.5	2
16	B50A096	Cotter pin 2.5x30	2
17	B50A097	Dustproof cover	2
18	B50A098	Lower A-arm	2
19	B50A099	Tire	2
20	B50A100	Rear rim 7"	2

Electrical [Image]

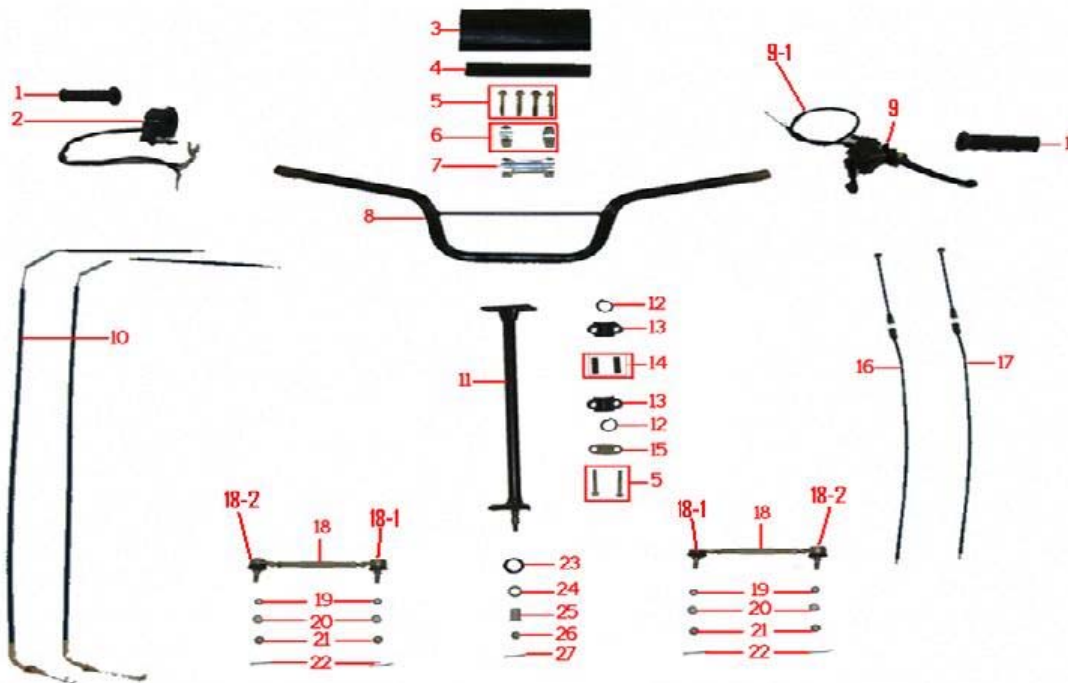


Electrical

Item No	Part Number	Description	Qty
01	B50A101	Ignition switch with keys	1
02	B50A102	Voltage	1
02-1	B50A103	Cap for voltage	1
03	B50A104	CDI	1
04	B50A105	Bolt M6x16	1
05	B50A106	Nut M6	1
06	B50A107	Regulator	1
07	B50A108	Relay	1
08	B50A109	Emergency switch	1
09	B50A110	Main cable	1
10	B50A111	Fuse	1
11	B50A112	50cc engine	1
11-1	B50A113	Cable for alternator	1
11-10	B50A122	Start motor	1
11-11	B50A123	Clutch	1
11-12	B50A124	Oil level gauge	1
11-13	B50A125	Bolt M6x20	4
11-14	B50A126	Intake pipeXS60	1
11-15	B50A127	Rubber washer for intake pipe	1
11-2	B50A114	Alternator	1
11-3	B50A115	Bolt M6*8	2
11-4	B50A116	Washer for gear	1
11-5	B50A117	Flywheel 428-12	1
11-6		Engine	1

11-7	B50A119	Bolt M6x32	2
11-8	B50A120	Engine side cover	1
11-9	B50A121	Spark plug	1
12	B50A128	Battery	1
12-1	B50A129	Bolt for battery	
13	B50A130	Horn	1
14	B50A131	Engine shield	1
15	B50A132	Carburator	1
16	B50A133	Air filter	1
17	B50A134	Nut M8	2
18	B50A135	Bolt M8x140	1
19	B50A136	Bolt M8x110	1
20	B50A137	Nut M8	2
21	B50A138	Muffler	1
21-1	B50A139	Seal for muffler	1
22	B50A140	Bolt M6x16	

Steering [Image]

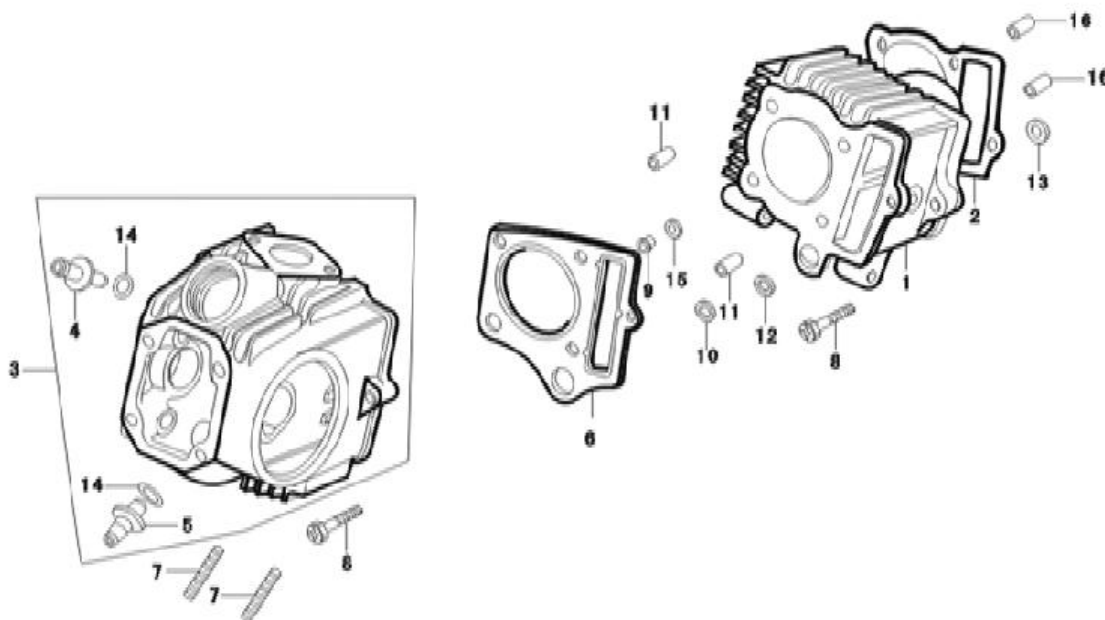


Steering

Item No	Part Number	Description	Qty
01	B50A141	Handle cover(L/R)	2
02	B50A142	Function button	1
03	B50A143	Foam cover	1
04	B50A144	Foam	1
05	B50A145	Bolt M8x55	6
06	B50A146	Upper block for handlebar	2
07	B50A147	Lower block for handlebar	1
08	B50A148	Handle bar	1
09	B50A149	Throttle body assy with lever	1
09-1	B50A171	Throttle cable	1
10	B50A150	Front brake cable	2
11	B50A151	Steering assy.	1
12	B50A152	Dustproof seal	2
13	B50A153	Clipper for steering pole	2
14	B50A154	Sleeve for clipper	2

15	B50A155	Fixing panel for steering pole	2
16	B50A156	Choke cable	1
17	B50A157	Throttle cable	1
18	B50A158	Tie rod	2
18-1	B50A172	tie rod end inside	2
18-2	B50A173	tie rod end outside	2
19	B50A159	Spring washer 10	1
20	B50A160	Washer 10	1
21	B50A161	Slotted nut M10	1
22	B50A162	Cotter pin 2.5x30	5
23	B50A163	Dustproof cover for steering pole	5
24	B50A164	Washer14x28x2	4
25	B50A165	PU cover	4
26	B50A166	Slotted nut M10x1.25	1
27	B50A167	Cotter pin 2.5x30	1

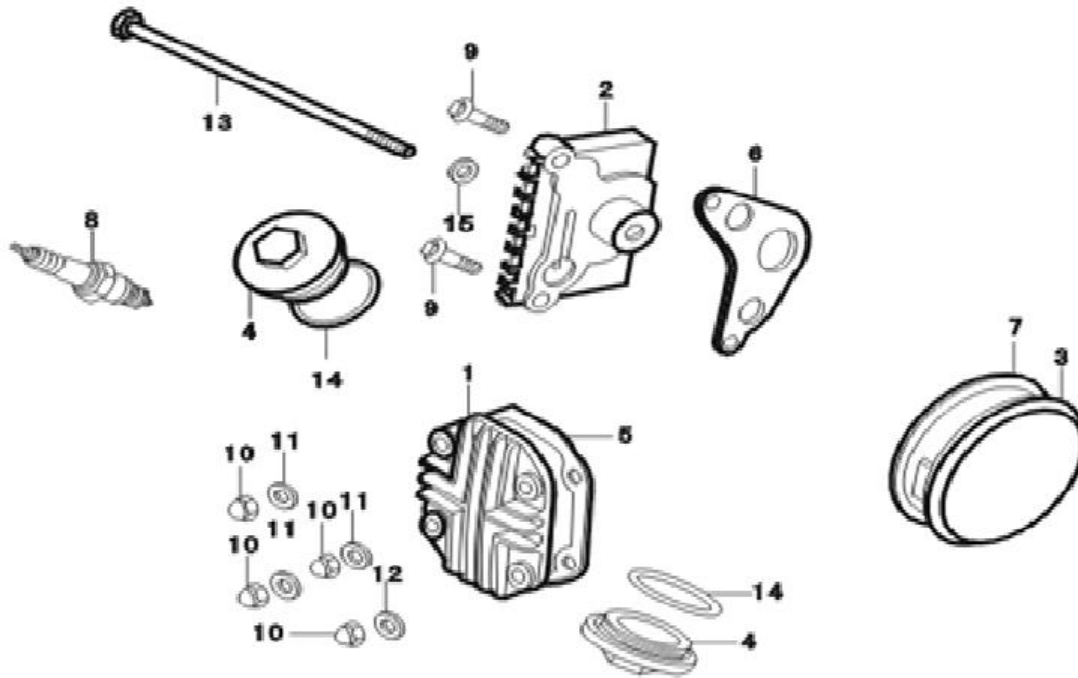
Cylinder Head [Image]



Cylinder Head

Item No	Part Number	Description	Qty
01	B50A174	CYLINDER ASSY.	1
02	B50A175	GASKET,CYLINDER	1
03	B50A176	HEAD ASSY., CYLINDER	1
04		PIPE.IN VALVE	1
05		PIPE.EX VALVE	1
06	B50A179	GASKET,CYLINDER HEAD	1
07	B50A180	STUD	2
08	B50A181	BOLT	2
09	B50A182	COLLAR	1
10	B50A183	WASHER	1
11	B50A184	PIN	2
12	B50A185	O-RING	1
13	B50A186	RECTANGULAR RING	1
14		O-RING	2
15	B50A188	RECTANGULAR RING	1
16	B50A189	CYLINDER ASSY.	2

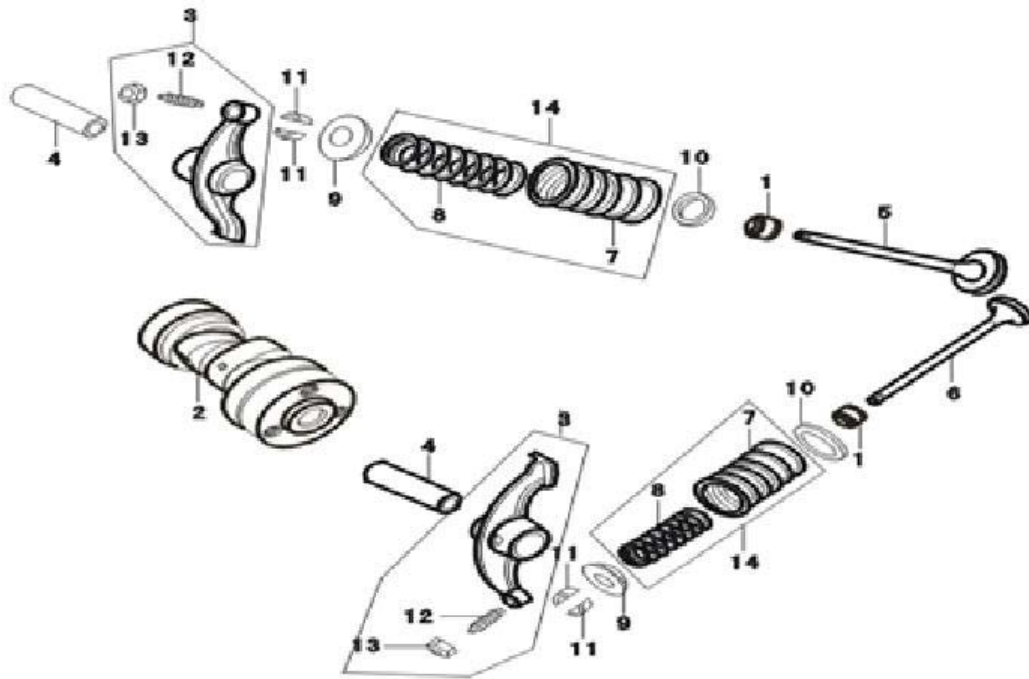
Cylinder Head Cover [Image]



Cylinder Head Cover

Item No	Part Number	Description	Qty
01	B50A190	COVER,CYLINDER HEAD	1
02	B50A191	COVER,R.CYLINDER HEAD SIDE	1
03	B50A192	COVER,L.CYLINDER HEAD SIDE	1
04	B50A193	VALVE CAP	2
05	B50A194	GASKET,CYLINDER HEAD COVER	1
06	B50A195	GASKET,R.CYLINDER HEAD SIDECOVER	1
07	B50A196	GASKET,L.CYLINDER HEAD SIDE COVER	1
08	B50A197	SPARK PLUG	1
09	B50A198	BOLT	2
10	B50A199	NUT,CYLINDER HEAD COVER	4
11	B50A200	GASKET	3
12	B50A201	GASKET	1
13	B50A202	BOLT M6×110	1
14	B50A203	O-RING	2
15	B50A204	GASKET	1

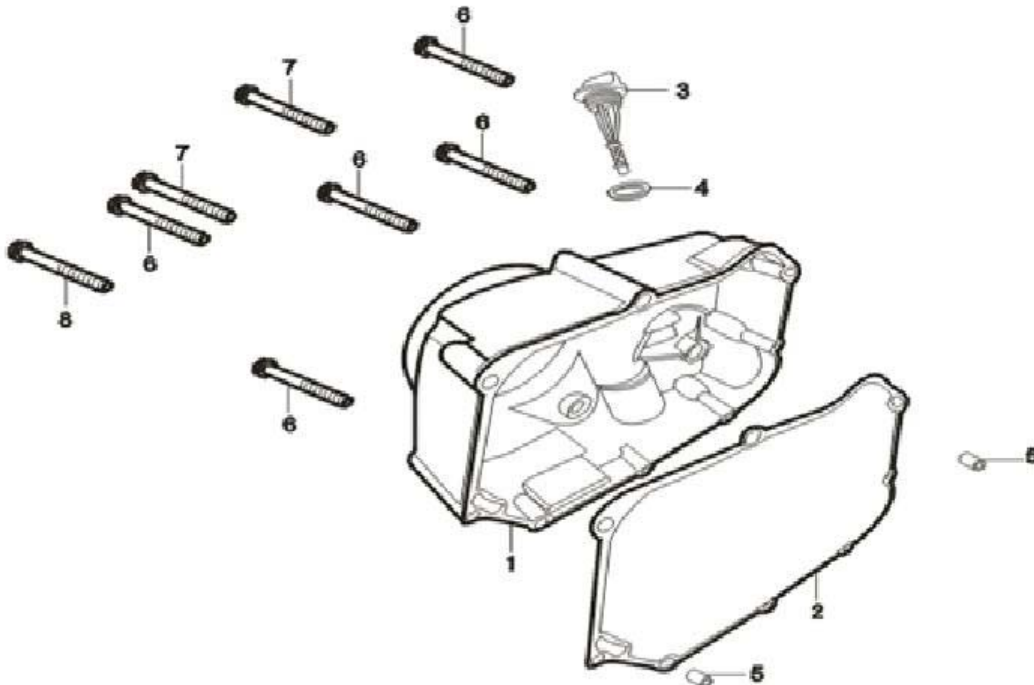
Camshaft [Image]



Camshaft

Item No	Part Number	Description	Qty
01	B50A205	OIL SEAL, VALVE	2
02	B50A206	CAMSHAFT COMP	1
03	B50A207	ARM, VALVE ROCKER	2
04	B50A208	SHAFT, VALVE ROCKER ARM	2
05	B50A209	VALVE, IN.	1
06	B50A210	VALVE, EX.	1
07	B50A211	SPRING, VALVE OUTER	2
08	B50A212	SPRING, VALVE INNER	2
09	B50A213	RETAINER, VALVE INNER SPRING	2
10	B50A214	SEAT, VALVE OUTER SPRING	2
11	B50A215	COTTER, VALVE	4
12	B50A216	SCREW, TAPPET ADJUSTING	2
13	B50A217	NUT, TAPPET ADJUSTING	2
14	B50A218	SPRING VALVE, ASSY	2

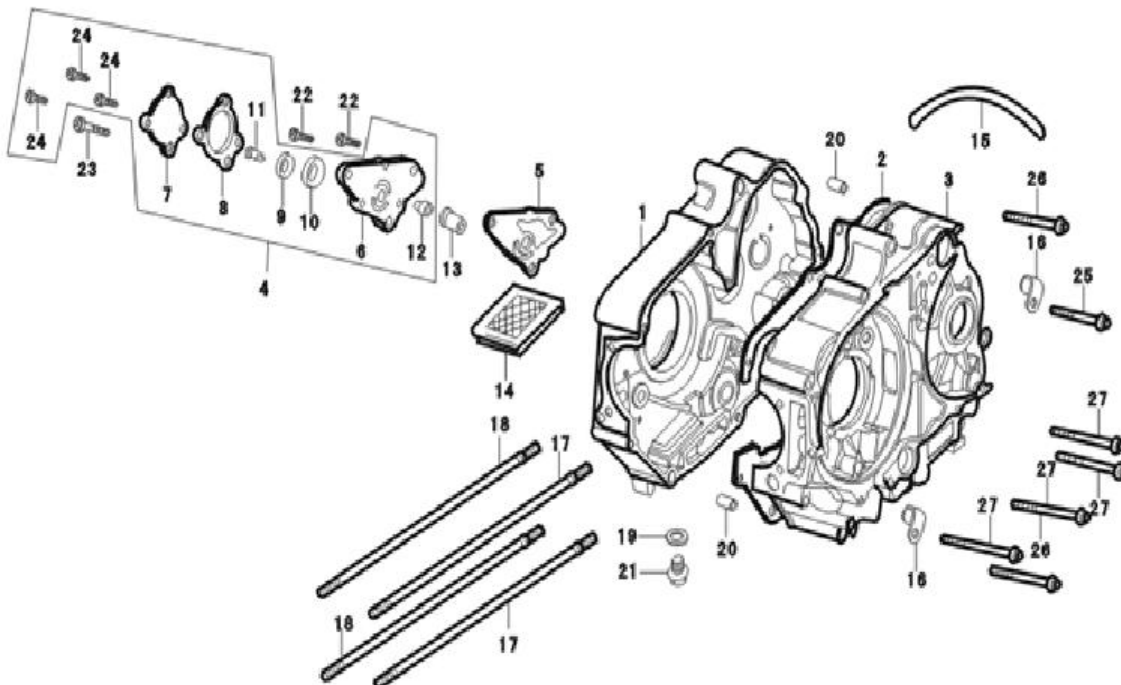
Right Crankcase Cover [Image]



Right Crankcase Cover

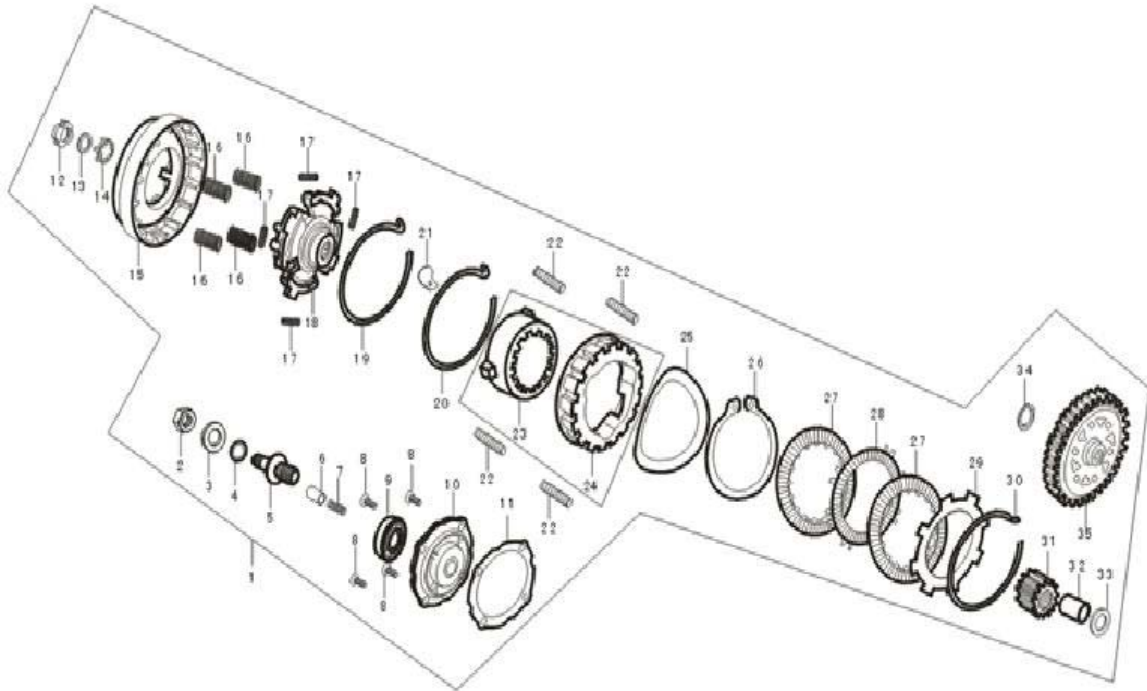
Item No	Part Number	Description	Qty
01	B50A219	COVER COMP.,R.CRANKCASE	1
02	B50A220	GASKET,R.CRANKCASE COVER	2
03	B50A221	GAUGE,OIL LEVEL	1
04	B50A222	O-RING	1
05	B50A223	PIN	2
06	B50A224	SCREW	5
07	B50A225	SCREW	2
08	B50A226	SCREW	1

Crankcase [Image]



Crankcase

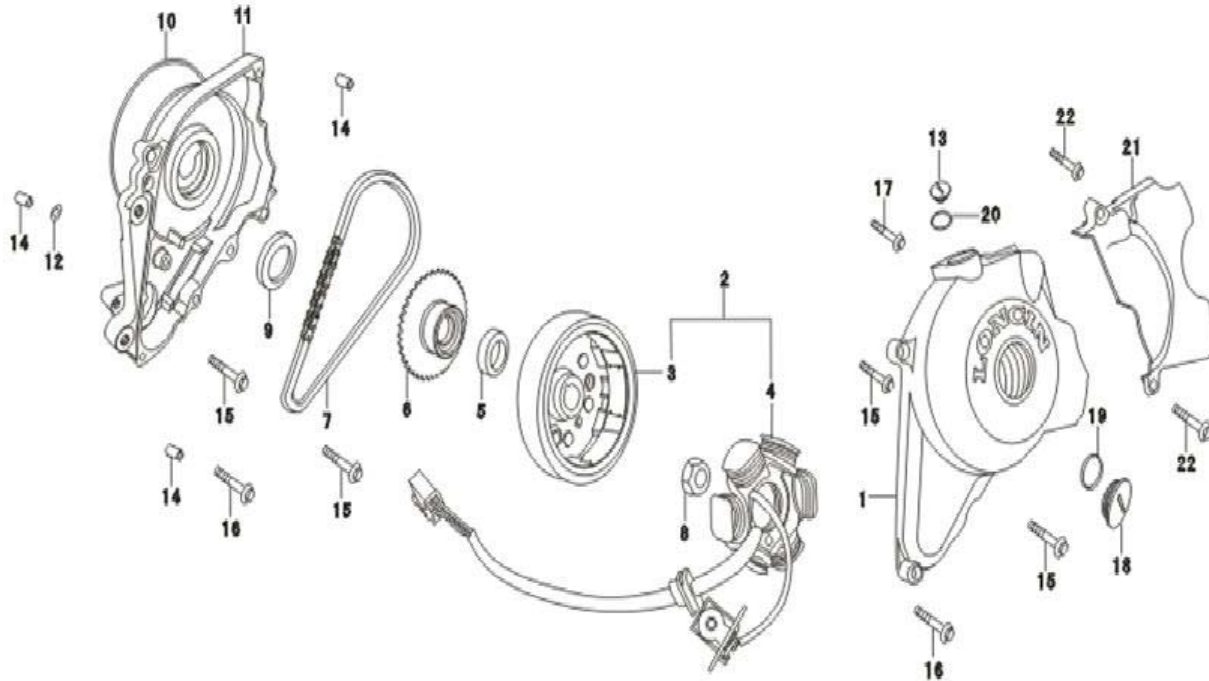
Item No	Part Number	Description	Qty
01	B50A227	CRANKCASE COMP.,R.	1
02	B50A228	GASKET,CRANKCASE	1
03	B50A229	CRANKCASE COMP.,L.	1
04	B50A230	OIL PUMP ASSY.	1
05	B50A231	GASKET,OIL PUMP	1
06		BODY,OIL PUMP	1
07		COVER,OIL PUMP	1
08		GASKET,OIL PUMP COVER	1
09		ROTOR,OIL PUMP INNER	1
10		ROTOR,OIL PUMP OUTER	1
11		SPINDLE,OIL PUMP	1
12		SLEEVE,OIL PUMP	1
13	B50A239	BUSH,OIL PUMP SPROCKET SPINDLE	1
14	B50A240	SCREEN,OIL FILTER	1
15	B50A241	TUBE, BREATHER	1
16	B50A242	CLAMP,BREATHER TUBE	2
17	B50A243	BOLT A,CYLINDER STUD	2
18	B50A244	BOLT B,CYLINDER STUD	2
19	B50A245	WASHER,DRAIN PLUG	1
20	B50A246	PIN,KNOCK	2
21	B50A247	BOLT,DRAIN PLUG	1
22	B50A248	SCREW	2
23	B50A249	SCREW	1
24		SCREW	3
25	B50A251	BOLT,FLANGE	1
26	B50A252	BOLT,FLANGE	2
27	B50A253	BOLT,FLANGE	3

Clutch [Image]**Clutch**

Item No	Part Number	Description	Qty
01	B50A254	CLUTCH ASSY	1
02	B50A255	NUT	1
03	B50A256	GASKET	1

04	B50A257	O-RING	1
05	B50A258	VALVE,ADJUSTING	1
06	B50A259	PIPE,OIL IN	1
07	B50A260	SPRING,OIL IN	1
08	B50A261	BOLT	4
09	B50A262	BEARING	1
10	B50A263	END COVER,CLUTCH	1
11	B50A264	GASKET,CLUTCH END COVER	1
12	B50A265	NUT	1
13	B50A266	WASHER,DISC	1
14	B50A267	WASHER	1
15	B50A268	OUTER COVER ASSY.,CLUTCH	1
16	B50A269	SPRING,CLUTCH	4
17	B50A270	DAMPER SPRING,CLUTCH	4
18	B50A271	DRIVING PLATE	1
19	B50A272	CIRCLIP	1
20		CIRCLIP	1
21		BLOCK	1
22	B50A276	SPRING	4
23		HUB ASSY, CLUTCH	1
24	B50A278	BOSS,CLUTCH	1
25		WASHER	1
26		SPRING, COLLAR	1
27	B50A281	DISK,CLUTCH FRICTION	2
28	B50A282	PLATE,CLUTCH LOWER	1
29	B50A283	PLATE,CLUTCH UPPER	2
30	B50A284	CIRCLIP	1
31	B50A285	GEAR,PRIMARY DRIVE	1
32	B50A286	BUSH	1
33		WASHER	1
34	B50A288	CIRCLIP	1
35	B50A289	PRIMARY DRIVEN GEAR COMP	1

Left Crankcase Cover [Image]

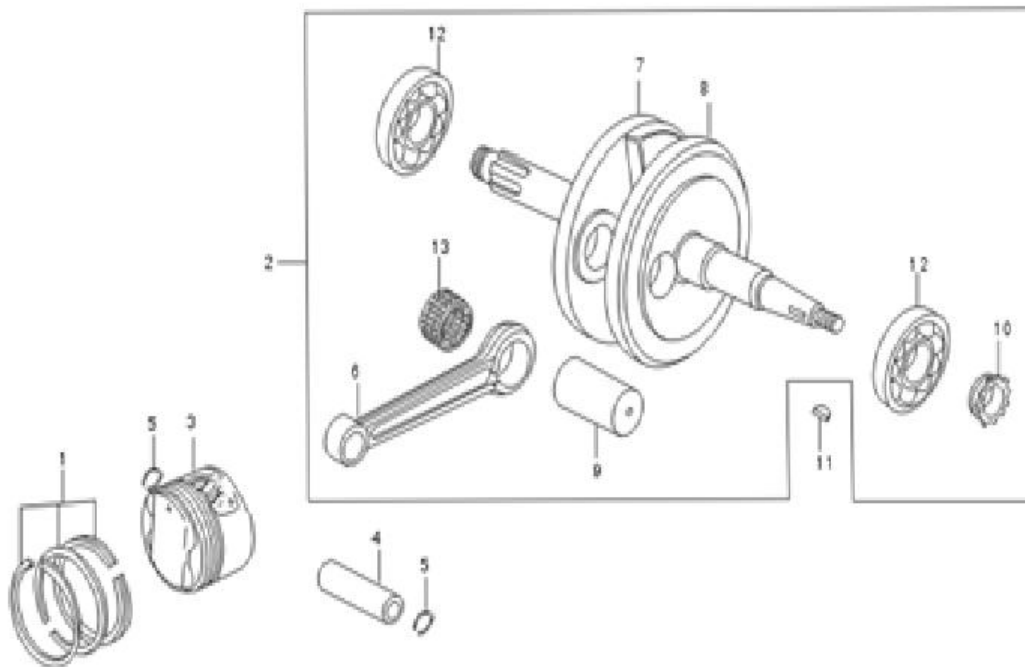


Left Crankcase Cover

Item No	Part Number	Description	Qty
---------	-------------	-------------	-----

01	B50A290	COVER,L.CRANKCASE	1
02		GENERATOR	1
03	B50A292	FLYWHEEL COMP	1
04	B50A293	STATOR COMP.	1
05	B50A294	OIL SEAL	1
06	B50A295	SPROCKET COMP,STARTING	1
07	B50A296	CHAIN,STARTING	1
08	B50A297	NUT	1
09	B50A298	OIL SEAL	1
10	B50A299	O-RING	1
11	B50A300	DISK COVER	1
12	B50A301	O-RING	1
13	B50A302	SMALL CAP EYEHOLE	1
14	B50A303	PIN,KNOCK	3
15	B50A304	BOLT	4
16	B50A305	BOLT	1
17	B50A306	BOLT	2
18	B50A307	BIG CAP EYEHOLE	1
19	B50A308	O-RING	1
20	B50A309	O-RING	1
21	B50A310	BACK,L.COVER	1
22	B50A311	BOLT	2

Crankshaft [Image]

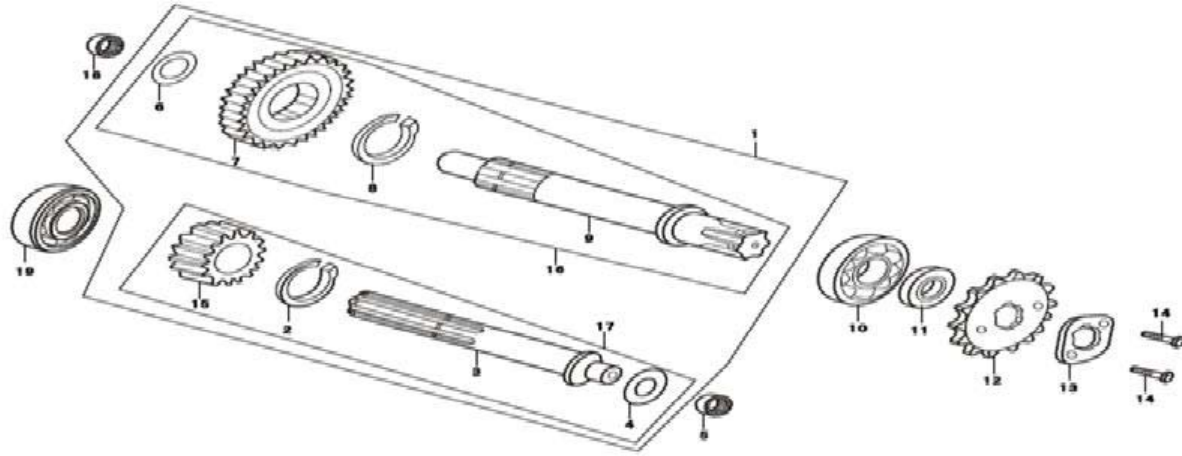


Crankshaft

Item No	Part Number	Description	Qty
01	B50A312	PISTON RING SET	1
02	B50A313	CRANKSHAFT COMP.	1
03	B50A314	PISTON	1
04	B50A315	PIN,PISTON	1
05	B50A316	CLIP,PISTON PIN	2
06		ROD,CONNECTING	1
07	B50A318	CRANKSHAFT COMP.,R.	1
08	B50A319	CRANKSHAFT COMP.,L.	1
09	B50A320	PIN,CRANK	1
10	B50A321	SPROCKET,TIMING	1

11	B50A322	KEY,WOODRUFF	1
12		BEARING 6304	2
13		NEEDLE BEARING	1

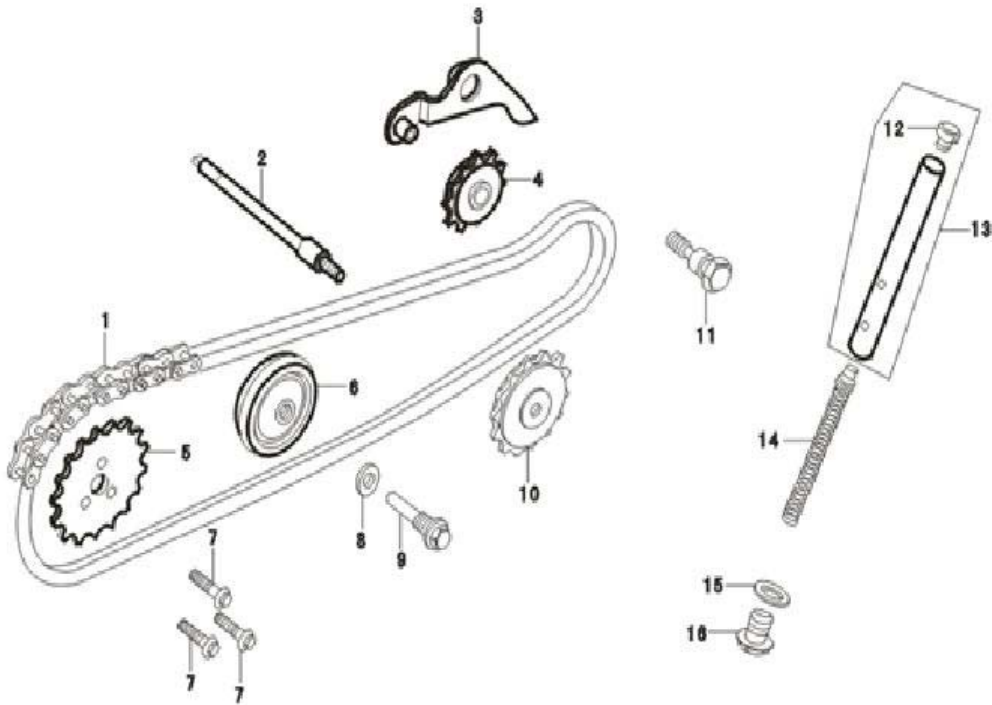
Mainshaft [Image]



Mainshaft

Item No	Part Number	Description	Qty
01	B50A325	TRANSMISSION ASSY	1
02	B50A326	CIRCLIP	1
03		MAINSHAFT	1
04	B50A328	GASKET	1
05	B50A329	BEARING	1
06	B50A330	GASKET	1
07		DRIVING GEAR,1ST COUNTERSHAFT	1
08	B50A332	CIRCLIP	1
09		COUNTERSHAFT	1
10	B50A334	BEARING	1
11	B50A335	OIL SEAL	1
12	B50A336	SPROCKET,DRIVE	1
13	B50A337	PLATE,FIXING	1
14	B50A338	BOLT M6×8	2
15		DRIVING GEAR, 1ST MAINSHAFT	1
16		COUNTERSHAFT ASSY	1
17	B50A341	MAINSHAFT ASSY	1
18	B50A342	BEARING	1
19	B50A343	BEARING	1

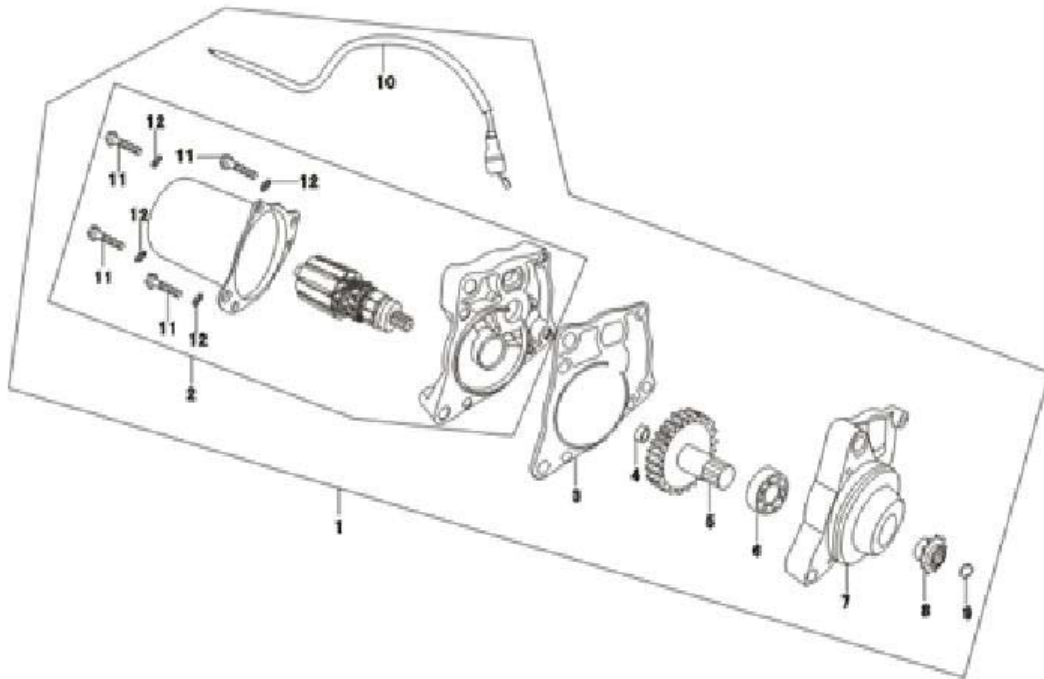
Chain [Image]



Chain

Item No	Part Number	Description	Qty
01	B50A344	CHAIN,CAM	1
02	B50A345	SPINDLE,CAM CHAIN GUIDE SPROCKET	1
03	B50A346	ARM COMP.,CAM CHAIN TENSIONER	1
04	B50A347	ROLLER,CAM CHAIN TENSIONER	1
05	B50A348	SPROCKET,CAM	1
06	B50A349	ROLLER COMP.,CAM CHAIN GUIDE	1
07	B50A350	BOLT,KNOCK	3
08	B50A351	WASHER,8MM	1
09	B50A352	PIN, CAM CHAIN GUIDE ROLLER	1
10	B50A353	SPROCKET,OIL PUMP	1
11	B50A354	PIVOT,CAM CHAIN TENSIONER	1
12		HEAD,CAM CHAIN TENSIONER PUSH ROD	1
13	B50A356	ROD COMP.,CAM CHAIN TENSIONER PUSH	1
14	B50A357	SPRING,CAM CHAIN TENSIONER	1
15	B50A358	WASHER,SEALING	1
16	B50A359	BOLT,SEALING	1

Kick Starter Spindle [Image]



Kick Starter Spindle

Item No	Part Number	Description	Qty
01	B50A360	MOTOR ASSY.,STARTER	1
02		MOTOR, STARTER	1
03		CUSHION	1
04		GASKET	1
05		GEAR	1
06		BEARING	1
07		END CAP	1
08		DRIVING CHAIN WHEEL	1
09		CIRCLIP	1
10	B50A369	HARNESS,STARTING MOTOR	1
11		SCREW	4
12		WASHER	4